

Eritrea: Essential Education Indicators 2010/11



**Ministry of Education
Asmara, Eritrea
December 2011**

Table of contents

| Contents | Page |
|---|------------|
| I. Introduction and executive summary..... | 1 |
| 1. Introduction | 1 |
| 2. Executive Summary | 2 |
| 3. Data channels | 3 |
| II. Important notes..... | 3-4 |
| 1. School system | 3 |
| 2. Definitions | 3-4 |
| III. Introductory information..... | 5 |
| IV. Pre-primary level..... | 7 |
| 1. Pre-primary schools | 7 |
| 2. Pre-primary enrolment | 7 |
| 3. Pre-primary teachers | 9 |
| V. Elementary level..... | 10 |
| 1. Background | 10 |
| 2. Enrolment | 10 |
| 3. Gross admission ratio | 11 |
| 4. Net admission ratio | 12 |
| 5. Over-age pupils in grade one | 13 |
| 6. Under-age pupils in grade one | 13 |
| 7. Children out of school | 14 |
| 8. Gross enrolment ratio | 15 |
| 9. Net enrolment ratio | 16 |
| 10. Percentage of repeaters | 17 |
| 11. Disparities among the zobas | 17 |
| VI. Middle level..... | 18 |
| 1. Background | 18 |
| 2. Enrolment | 18 |
| 3. Gross enrolment ratio | 19 |
| 4. Net enrolment ratio | 21 |
| 5. Percentage of repeaters | 22 |
| VII. Secondary level..... | 22 |
| 1. Background | 22 |
| 2. Enrolment | 22 |
| 3. Gross enrolment ratio | 23 |
| 4. Net enrolment ratio | 24 |
| 5. Percentage of repeaters | 25 |
| VIII. Internal efficiency..... | 26 |
| 1. Length of school year | 26 |
| 2. All grades flow rate | 26 |
| 3. Elementary level: Flow rate | 27 |
| 4. Middle level: Flow rate | 27 |
| 5. Secondary level: Flow rates | 27 |
| 6. Elementary level: Zobas flow rates | 28 |
| 7. Middle level: Zoba flow rate | 29 |
| 8. Secondary level: Zoba flow rate | 30 |
| 9. Elementary level: Cohort reconstruction – National and zobas | 31 |

| Content | Page |
|--|-------------|
| IX Teaching staff: Elementary, middle and secondary level | 32 |
| 1. Pupil/teachers ratio: Elementary, middle and secondary level..... | 32 |
| 2. Teachers' qualification..... | 33 |
| 3. Female teachers..... | 34 |
| X Age-Specific Enrolment 2008/09..... | 35 |

Charts and figures

| | |
|---|-----------|
| Chart 1. Pre-primary: Enrolment by year and gender..... | 8 |
| Chart 2. Elementary level: Enrolment by zoba and gender..... | 11 |
| Chart 3. Elementary level: Gross and net admission ratio..... | 12 |
| Chart 4. Elementary level: Enrolment by year and gender..... | 14 |
| Chart 5. Elementary level: Gross enrolment ratio by year..... | 15 |
| Chart 6. Elementary level: Net enrolment ratio by year..... | 16 |
| Chart 7. Elementary level: Gross enrolment ratio by zoba | 18 |
| Chart 8. Middle level: Enrolment by zoba and gender..... | 19 |
| Chart 9. Middle level: Enrolment by year and gender..... | 20 |
| Chart 10. Secondary level: Enrolment by zoba and gender..... | 23 |
| Chart 11. Secondary level: Enrolment by year and gender..... | 24 |
| Chart 12. Secondary level: GER and NER by gender and year..... | 25 |
| Chart 13. Elementary level: Hypothetical cohort reconstruction (constant) – Eritrea..... | 29 |
| Chart 14. Elementary level: Average length of study per student (ALSS) by zoba..... | 30 |
| Chart 15. Percentage of wastage due to dropout and repetition by zoba..... | 30 |

Tables

| | |
|--|-----------|
| Table 1. Enrolment: level and gender by year, 1991/92-2010/11..... | 5 |
| Table 2. Teachers: level and gender by year, 1991/92-2010/11..... | 6 |
| Table 3. Enrolment and percentage distribution of non-gov schools by level and year | 7 |
| Table 4. Pre-primary level: Location and ownership by zoba, 2010/11..... | 7 |
| Table 5. Pre-primary level: Gross enrolment ratio by year, 1991/92-2010/11..... | 8 |
| Table 6. Pre-primary level: Net enrolment ratio by year, 2010/11..... | 8 |
| Table 7. Pre-primary level: Gender and teacher's training status by zoba, 2010/11..... | 9 |
| Table 8. Pre-primary level: Pupil/teacher ratio, 1991/92-2010/11..... | 9 |
| Table 9. Pre-primary level: Percentage of female teachers, 1991/92-2010/11 | 10 |
| Table 10. Elementary level: Percentage of change by zoba and gender, 2010/11 | 10 |
| Table 11. Elementary level: Gross admission ratio by year, 1991/92-2010/11..... | 11 |
| Table 12. Elementary level: Net admission ratio by year, 1991/92-2010/11..... | 12 |
| Table 13. Elementary level: Percentage of over-age pupils in grade one, 1991/92-2010/11..... | 13 |
| Table 14. Elementary level: Percentage of under-age pupils in grade one, 1991/92-2010/11..... | 13 |
| Table 15. Elementary level: Percentage of children out of school, 1991/92-2010/11..... | 14 |
| Table 16. Elementary level: Gross enrolment ratio by year, 1991/92-2010/11..... | 15 |
| Table 17. Elementary level: Net enrolment ratio by year, 1991/92-2010/11..... | 16 |
| Table 18. Elementary level: Percentage of repeaters by gender and year, 1991/92-2010/11..... | 17 |
| Table 19. Elementary level: Deviation from national GER by zoba, 2010/11..... | 17 |
| Table 20. Elementary level: Deviation from national NER by zoba, 2010/11..... | 18 |
| Table 21. Middle level: Percentage of change by zoba and gender, 2010/11..... | 18 |
| Table 22. Middle level: Gross enrolment ratio by year, 1991/92-2010/11..... | 19 |
| Table 23. Middle level: Deviation from national GER by zoba, 2010/11..... | 20 |
| Table 24. Middle level: Net enrolment ratio by year, 1991/92-2010/11..... | 21 |
| Table 25. Middle level: Deviation from national NER by zoba, 2010/11..... | 21 |
| Table 26. Middle level: Percentage of repeaters by year, 1991/92-2010/11..... | 22 |
| Table 27. Secondary level: Percentage of changes by zoba and gender, 2010/11..... | 22 |
| Table 28. Secondary level: Gross enrolment ratio by year, 1991/92-2010/11..... | 23 |
| Table 29. Secondary level: Deviation from national GER by zoba, 2010/11..... | 23 |
| Table 30. Secondary level: Net enrolment ratio by year, 1991/92-2010/11..... | 24 |

| Content | Page |
|---|-------------|
| Table 31. Secondary level: Deviation from national NER by zoba, 2010/11..... | 24 |
| Table 32. Secondary level: Percentage of repeaters by year, 1991/92-2010/11..... | 25 |
| Table 33. Elementary level: Duration of school year, 2010/11..... | 26 |
| Table 34. All grades: Flow rates by gender and grade 2010/11..... | 26 |
| Table 35. Elementary level: Flow rate by age and gender, 2010/11..... | 27 |
| Table 36. Middle level: Flow rate by age and gender, 2010/11..... | 27 |
| Table 37. Secondary level: Flow rate by age and gender, 2010/11..... | 27 |
| Table 38. Elementary level: Average flow rate 2010/11..... | 28 |
| Table 39. Middle level: Average flow rate, 2010/11..... | 29 |
| Table 40. Secondary level: Average flow rate, 2010/11..... | 30 |
| Table 41. Eritrea elementary level: Wastage, survival and transition ratios by Zoba..... | 32 |
| Table 42. Teachers: Gender and level by zoba, 2010/11..... | 33 |
| Table 43. Pupil/teacher ratio by year and level, 2010/11..... | 33 |
| Table 44. Teachers' qualifications, 2010/11..... | 34 |
| Table 45. Number and percentage of female teachers by level 1991/92-2010/11..... | 34 |
| Table 46. Age-specific enrolment 2010/11..... | 35 |

I. Introduction and executive summary

1. Introduction

‘Eritrea: Essential Education Indicators is the official, annual education publication of the Ministry of Education (MoE) dealing with basic essential indicators. It is the 15th report produced by the Department of Research and Human Resource Development in terms of organization of schools in the six administrative zobas, the Zobas. The sources of information for this publication are annual school censuses carried out by Zoba education offices through standard questionnaires.

This publication covers data from Early Childhood Education (ECE) and General Education (Elementary, Middle and Secondary level). The main purpose of the 2010/11 publication is to provide useful, relevant, reliable and up-to-date information on education for various stakeholders within and outside the education sector.

The MoE believes that the data presented in this publication is by no means considered exhaustive. For further inclusion and refinement to be made, the Ministry of Education is working to improve the quality and coverage of the education statistics. Moreover, continuous efforts will be made to produce better and timely information.

This publication would not have been possible without the contribution of the six Zoba education offices and other educational institutions. The department remains deeply indebted to all for the efforts made to successfully finalize this publication.

The MoE truly appreciates to all those who provided feedback and other relevant input.

Please feel free to give your serviceable feedback regarding the content and form of this education abstract so the department will be able to enrich this publication.

Department of Research and HRD
Ministry of Education
Asmara

December 2011

2. Executive summary

In the academic year 2010//11, enrolment in elementary level increased by 9 percent and the increase is observed all over the country. Enrolment in middle and secondary levels increased by 1.8 percent and 5.2 percent respectively as compared to previous academic year (2009/10). An increase in enrolment in middle level is observed in all Zobas except in Maekel and an increase in enrolment in secondary level is observed in all zobas except in Dehubawi Keih Bahri and Maekel.

In the academic year of 2010/11, enrolment of girls in elementary, middle and secondary levels increased by 8, 2.5 and 8.6 percent respectively.

As compared to the academic year 2009/10, in the academic year 2010/11 national enrolment of girls and boys increased by 6.5 and 6 percent respectively. The participation ratio of girls is still lower than that of boys except in literacy programmes, which is 88.52 percent. The gross enrolment ratios of females in pre-primary, elementary, middle and secondary levels were 35.1, 81.3, 56.2 and 29.5 percent respectively.

The number of students and teachers in pre-primary education has increased by 13.8 and 6.3 percent respectively and the number of schools in pre-primary has increased by 0.8 percent. The number of schools by level in elementary, middle and secondary schools increased by 4.5, 2.7 and 3.5 percent respectively. The number of teachers in elementary, middle and secondary levels increased by 2.2, 0.7 and 3.6 percent respectively.

The gross national accessibility to schooling in 2010/11 was about 34.5 percent, 86.9 percent, 61.6 percent and 34.5 percent in pre-primary, elementary, middle and secondary levels respectively.

The subsequent sections of this publication/abstract show the overall situation of the education system at all levels as well as some statistical information obtained since 1991.

3. Data channels

The information in this statistical abstract is gathered mainly from three questionnaires named number 7, 8 and 9. The first two questionnaires consist of closed questions/items, in which schools and institutions send back the *November data* on Pre-primary, Elementary, Middle, and Secondary schools to the MoE. The expected time of completion of these questionnaires is April. In every academic year normally 100% of the questionnaires are collected.

Item questionnaire 9 cover a school's physical, financial and internal efficiency particulars. The expected time of completion of this Questionnaire is July, which is after the end of each academic year.

The Department assure users of this abstract that all necessary measures have been taken to make the information provided in this issue valuable and reliable.

Data in all tables, unless otherwise stated, refer to the academic year 2010/11. Table numbers are sub-grouped under corresponding sections. Charts are sequenced in a continuous ascending order throughout the abstract.

II. Important notes

We would like to remind users of our yearly abstracts that we have been using different school age estimations in our previous publications. From now onwards our publications will be based on the new school age estimation made by the National Statistics Office (NSO) in 2010. Hence, it is to be expected that the values of the indicators to be affected.

1. School system

| Level | Grade | Age |
|------------|-------|-------|
| Pre-school | I, II | 5-6 |
| Elementary | 1-5 | 7-11 |
| Middle | 6-8 | 12-14 |
| Secondary | 9-12 | 15-18 |

2. Definitions

2.1 Government schools are schools administered and financed by the Ministry of Education.

2.2 Non-government schools are schools administered and financed by institutions other than the Ministry of Education.

• **Types of Non government (Non-gov) schools are:-**

2.2.1 Community schools are schools administered by municipalities or local or foreign communities

2.2.2 Awkaf (Mahad) schools are schools administered by Awkaf (Islamic religion association).

2.3.3 Mission schools are schools administered by churches (Coptic, Catholic, and Protestant churches).

2.3 Special schools are schools for the deaf and the blind. There are two schools for the deaf, one in Keren and another in Asmara and one school for the blind in Asmara.

2.4 Number of schools by level:

A school having grades 1-12 is considered as three (1-5, 6-8, 9-12) schools by **level** regardless of being single **site**; schools having grades 1-8 are considered as two schools as it contains two levels (1-5 and 6-8) and the same for schools having grades 6-12.

2.5 Number of schools by site:

One single school compound or **site** may accommodate a combination of two or three level of schools but may be counted as one school **for purposes of specific location**. The number of schools by level is usually greater than the number of schools by site.

III. Introductory information

Tables 1 and 2 give the number of students and teachers of General Education, Asmara Teachers Education Institute (ATEI) and Technical and vocational schools (Tech. and voc.) since 1991/92.

Table 1: Enrolment: Level and gender by year 1991/92-2010/11

| Year | Level | | | | | | Post secondary | | | |
|---------|------------|---------|--------|---------|-----------|--------|----------------|-------|----------------|-------|
| | Elementary | | Middle | | Secondary | | ATEI | | Tech. and voc. | |
| | F | T | F | T | F | T | F | T | F | T |
| 1991/92 | 69,324 | 150,870 | 13,765 | 27,917 | 13,183 | 27,627 | 290 | 1,268 | 61 | 480 |
| 1992/93 | 82,356 | 184,492 | 13,375 | 28,427 | 14,390 | 31,531 | 720 | 2,580 | 58 | 537 |
| 1993/94 | 92,536 | 208,199 | 14,652 | 32,781 | 13,324 | 32,756 | 54 | 398 | 60 | 589 |
| 1994/95 | 99,743 | 224,287 | 15,685 | 34,995 | 14,631 | 36,728 | 674 | 2,185 | 53 | 546 |
| 1995/96 | 108,254 | 241,725 | 18,103 | 39,751 | 15,475 | 39,151 | 9 | 93 | 59 | 536 |
| 1996/97 | 108,487 | 240,737 | 20,721 | 47,460 | 16,332 | 40,594 | 52 | 359 | 71 | 546 |
| 1997/98 | 111,930 | 247,499 | 24,154 | 57,152 | 16,417 | 41,615 | 87 | 478 | 69 | 406 |
| 1998/99 | 118,385 | 261,963 | 29,290 | 67,021 | 17,756 | 47,533 | 73 | 471 | 140 | 908 |
| 1999/00 | 133,045 | 295,941 | 33,284 | 74,317 | 22,093 | 59,626 | 129 | 606 | 147 | 1,018 |
| 2000/01 | 134,168 | 298,691 | 35,107 | 76,564 | 23,596 | 63,951 | 197 | 961 | 464 | 1,866 |
| 2001/02 | 146,218 | 330,278 | 34,667 | 80,882 | 25,054 | 70,183 | 169 | 1,022 | 393 | 1,992 |
| 2002/03 | 159,563 | 359,423 | 36,881 | 87,019 | 26,185 | 72,818 | 61 | 874 | 429 | 1,965 |
| 2003/04 | 165,954 | 374,997 | 49,224 | 122,966 | 22,952 | 69,401 | 474 | 474 | 531 | 1,917 |
| 2004/05 | 167,451 | 377,512 | 53,996 | 139,029 | 26,041 | 76,051 | 365 | 492 | 675 | 1,152 |
| 2005/06 | 161,875 | 364,263 | 57,448 | 148,082 | 27,293 | 77,644 | N.A | N.A | 881 | 2,060 |
| 2006/07 | 149,755 | 331,855 | 59,342 | 141,081 | 30,329 | 75,800 | 102 | 646 | 685 | 1,488 |
| 2007/08 | 140,792 | 314,034 | 60,265 | 144,031 | 34,088 | 83,411 | 177 | 630 | 2,581 | 6,094 |
| 2008/09 | 135,018 | 300,129 | 64,114 | 151,131 | 35,764 | 89,761 | 202 | 630 | 2,203 | 4,620 |
| 2009/10 | 129,218 | 286,021 | 66,930 | 151,702 | 39,306 | 95,076 | 160 | 563 | 1,690 | 4,012 |
| 2010/11 | 139,584 | 311,737 | 68,588 | 154,527 | 42,684 | 99,993 | 150 | 534 | 1,746 | 4,640 |

N.B this enrolment table includes students enrolled in regular/formal schools only

* ATEI stands for Asmara Teachers Education Institute

*Tech. and voc. Stands for Technical and Vocational

Table 2: Teachers: Level and gender by year 1991/92-2010/11

| Year | Elementary | | Middle | | Secondary | | ATEI | | Tech. and voc | |
|---------|------------|-------|--------|-------|-----------|-------|------|----|---------------|-----|
| | F | T | F | T | F | T | F | T | F | T |
| 1991/92 | 1,411 | 3,647 | 139 | 783 | 67 | 758 | 3 | 31 | 5 | 67 |
| 1992/93 | 1,841 | 4,954 | 143 | 854 | 93 | 905 | 6 | 87 | 4 | 75 |
| 1993/94 | 1,865 | 5,272 | 140 | 978 | 104 | 1,015 | 3 | 34 | 0 | 63 |
| 1994/95 | 1,974 | 5,583 | 139 | 948 | 108 | 1,081 | 3 | 44 | 2 | 74 |
| 1995/96 | 2,025 | 5,828 | 156 | 992 | 103 | 1,039 | 2 | 32 | 6 | 80 |
| 1996/97 | 1,977 | 5,476 | 170 | 1,017 | 106 | 942 | 6 | 33 | 1 | 79 |
| 1997/98 | 1,893 | 5,799 | 170 | 1,162 | 113 | 959 | 4 | 38 | 0 | 66 |
| 1998/99 | 1,951 | 5,576 | 149 | 1,208 | 112 | 982 | 3 | 38 | 4 | 101 |
| 1999/00 | 2,330 | 6,229 | 167 | 1,312 | 109 | 1,047 | 2 | 32 | 9 | 104 |
| 2000/01 | 2,710 | 6,668 | 160 | 1,377 | 115 | 1,188 | 11 | 37 | 9 | 173 |
| 2001/02 | 2,873 | 7,498 | 177 | 1,529 | 145 | 1,419 | 6 | 47 | 17 | 174 |
| 2002/03 | 2,756 | 7,692 | 178 | 1,614 | 140 | 1,277 | 5 | 46 | 69 | 265 |
| 2003/04 | 2,887 | 8,033 | 216 | 2,241 | 215 | 1,645 | 11 | 23 | 78 | 326 |
| 2004/05 | 3,166 | 7,942 | 245 | 2,449 | 215 | 1,609 | 4 | 25 | 16 | 169 |
| 2005/06 | 3,296 | 7,711 | 257 | 2,491 | 188 | 1,552 | 0 | 0 | 15 | 145 |
| 2006/07 | 3,305 | 6,933 | 245 | 2,478 | 208 | 1,778 | 12 | 41 | 10 | 169 |
| 2007/08 | 3,241 | 7,311 | 258 | 2,704 | 210 | 1,811 | 10 | 39 | 39 | 376 |
| 2008/09 | 3,144 | 7,802 | 331 | 3,352 | 267 | 2,292 | 10 | 41 | 39 | 389 |
| 2009/10 | 3,080 | 7,536 | 485 | 3,680 | 314 | 2,472 | 10 | 48 | 42 | 429 |
| 2010/11 | 3,124 | 7,704 | 532 | 3,707 | 374 | 2,561 | 11 | 36 | 46 | 414 |

N.B In elementary and middle levels only directors are included in teaching staff where as in secondary level directors and other staffs those who are actively participated in teaching and learning process are included Such as peda. Head and unit leader...etc.

Table 3. Enrolment and Percentage distribution of Non-gov. schools by level and year

| Year | 1- 5 | | | 6 – 7 | | | 8 – 11 | | |
|---------|----------|---------|------|----------|---------|------|----------|--------|-----|
| | Non-gov. | T | % | Non-gov. | T | % | Non-gov. | T | % |
| 1991/92 | 33,377 | 150,870 | 22.1 | 4,788 | 27,917 | 17.2 | 794 | 27,627 | 2.9 |
| 1992/93 | 31,513 | 184,492 | 17.1 | 5,174 | 28,427 | 18.2 | 1,740 | 31,531 | 5.5 |
| 1993/94 | 31,766 | 208,199 | 15.3 | 5,203 | 32,781 | 15.9 | 1,984 | 32,756 | 6.1 |
| 1994/95 | 30,398 | 224,287 | 13.6 | 4,992 | 34,995 | 14.3 | 2,530 | 36,728 | 6.9 |
| 1995/96 | 30,650 | 241,725 | 12.7 | 5,385 | 39,751 | 13.5 | 3,514 | 39,151 | 9.0 |
| 1996/97 | 29,578 | 240,737 | 12.3 | 5,841 | 47,460 | 12.3 | 3,313 | 40,594 | 8.2 |
| 1997/98 | 27,292 | 247,499 | 11.0 | 5,401 | 57,152 | 9.5 | 2,634 | 41,615 | 6.3 |
| 1998/99 | 29,153 | 261,963 | 11.1 | 5,417 | 67,021 | 8.1 | 2,094 | 47,533 | 4.4 |
| 1999/00 | 29,766 | 295,941 | 10.1 | 5,155 | 74,317 | 6.9 | 2,292 | 59,626 | 3.8 |
| 2000/01 | 27,860 | 298,691 | 9.3 | 5,598 | 76,564 | 7.3 | 2,591 | 63,951 | 4.1 |
| 2001/02 | 27,269 | 330,278 | 8.3 | 5,758 | 80,882 | 7.1 | 2,672 | 70,183 | 3.8 |
| 2002/03 | 28,570 | 359,423 | 7.9 | 6,201 | 87,019 | 7.1 | 2,761 | 72,818 | 3.8 |
| | 1- 5 | | | 6 – 8 | | | 9-12 | | |
| 2003/04 | 29,134 | 374,997 | 7.8 | 8,933 | 122,966 | 7.3 | 2,630 | 69,401 | 3.8 |
| 2004/05 | 29,862 | 377,512 | 7.9 | 9,422 | 139,029 | 6.8 | 2,701 | 76,051 | 3.6 |
| 2005/06 | 29,728 | 364,263 | 6.6 | 9,458 | 148,082 | 4.1 | 2,401 | 77,644 | 3.1 |
| 2006/07 | 29,070 | 331,855 | 8.8 | 9,492 | 141,081 | 6.7 | 1,497 | 75,800 | 2.0 |
| 2007/08 | 28,482 | 314,034 | 9.1 | 10,460 | 144,031 | 7.3 | 2,351 | 83,411 | 2.8 |
| 2008/09 | 26,979 | 300,129 | 9.0 | 10,155 | 151,131 | 6.7 | 2,425 | 89,761 | 2.7 |
| 2009/10 | 22,543 | 286,021 | 7.9 | 6,034 | 151,702 | 4.0 | 2,611 | 95,076 | 2.7 |
| 2010/11 | 22,999 | 311,737 | 7.4 | 8,672 | 154,527 | 5.6 | 1,361 | 99,993 | 1.4 |

IV. Pre-primary level

1. Pre-primary schools

In the academic year 2010/11, there were 474 pre-primary schools in the whole country. 135 (28.5%) of them are located in Zoba Debub. Out of which 106 (78.5%) are located in rural area of the region.

In the academic year 2010/11, 305 (64.3%) out of the 474 schools were government owned, while the rest of the schools, 165 (35.1%) were non-government owned.

Table 4. Pre-primary level: Location and ownership by zoba, 2010/11

| Zoba | Ownership | | | | | | | | | | | | |
|--------------|------------|------------|------------|------------|------------|-----------|-----------|----------|----------|-----------|----------|-----------|-----------|
| | Total | | | Government | | Mission | | Awkaf | | Private | | Community | |
| | Tot | Urb | Rur | Urb | Rur | Urb | Rur | Urb | Rur | Urb | Rur | Urb | Rur |
| Anseba | 76 | 15 | 61 | 10 | 56 | 3 | 5 | 0 | 0 | 1 | 0 | 1 | 0 |
| Debub | 135 | 29 | 106 | 13 | 88 | 9 | 12 | 0 | 0 | 4 | 2 | 3 | 4 |
| Deb-Keih-B. | 24 | 5 | 19 | 5 | 18 | 0 | 1 | 0 | 0 | 0 | 0 | 0 | 0 |
| Gash Barka | 65 | 27 | 38 | 25 | 33 | 2 | 0 | 0 | 0 | 0 | 0 | 0 | 5 |
| Maekel | 134 | 68 | 66 | 9 | 44 | 12 | 5 | 0 | 0 | 19 | 6 | 28 | 11 |
| Sem-Keih-B. | 40 | 16 | 24 | 10 | 23 | 5 | 1 | 0 | 0 | 0 | 0 | 1 | 0 |
| Total | 474 | 160 | 314 | 72 | 262 | 31 | 24 | 0 | 0 | 24 | 8 | 33 | 20 |

N.B. Urb = Urban Rur = Rural

2. Pre-primary enrolment

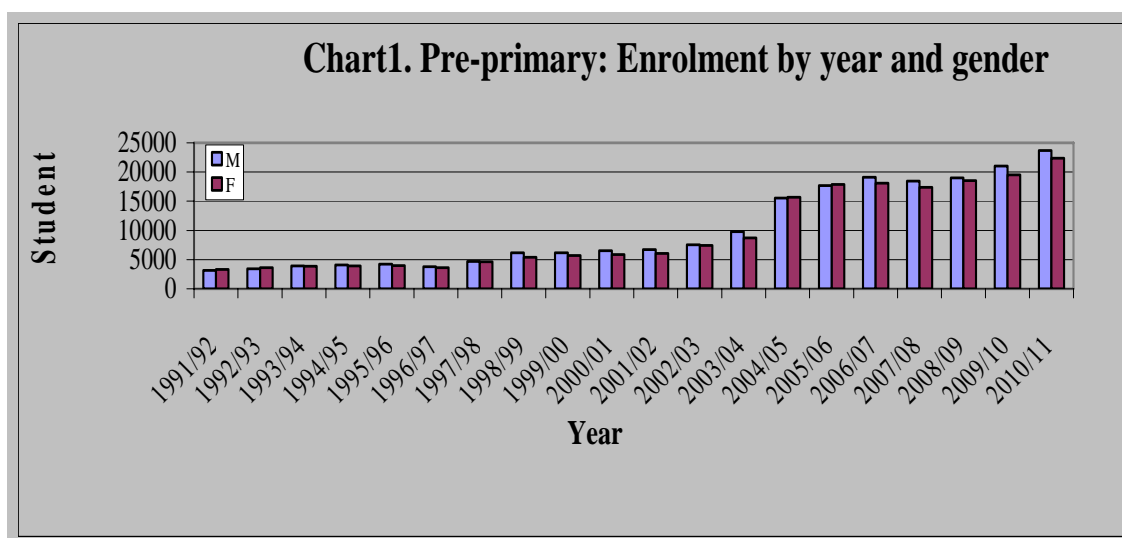
Children of ages 5 and 6 are supposed to be enrolled in pre-primary schools.

Table 5. Pre-primary level: Gross enrolment ratio by year, 1991/92-2010/11

| Year | Population age-group 5-6 | | | Enrolment in pre-primary | | | Gross enrolment ratio | | |
|---------|--------------------------|--------|--------|--------------------------|--------|--------|-----------------------|------|------|
| | T | M | F | T | M | F | T | M | F |
| 1991/92 | 110,550 | 57,536 | 53,014 | 6,461 | 3,142 | 3,319 | 5.8 | 5.5 | 6.3 |
| 1992/93 | 113,917 | 59,289 | 54,628 | 7,031 | 3,426 | 3,605 | 6.2 | 5.8 | 6.6 |
| 1993/94 | 117,386 | 61,094 | 56,292 | 7,748 | 3,909 | 3,839 | 6.6 | 6.4 | 6.8 |
| 1994/95 | 120,961 | 62,955 | 58,006 | 8,032 | 4,102 | 3,930 | 6.6 | 6.5 | 6.8 |
| 1995/96 | 124,645 | 64,872 | 59,773 | 8,180 | 4,201 | 3,979 | 6.6 | 6.5 | 6.7 |
| 1996/97 | 128,441 | 66,848 | 61,593 | 7,443 | 3,791 | 3,652 | 5.8 | 5.7 | 5.9 |
| 1997/98 | 132,353 | 68,884 | 63,469 | 9,300 | 4,683 | 4,617 | 7.0 | 6.8 | 7.3 |
| 1998/99 | 136,383 | 70,982 | 65,402 | 11,581 | 6,168 | 5,413 | 8.5 | 8.7 | 8.3 |
| 1999/00 | 140,537 | 73,143 | 67,394 | 11,885 | 6,181 | 5,704 | 8.5 | 8.5 | 8.5 |
| 2000/01 | 144,817 | 75,371 | 69,446 | 12,436 | 6,540 | 5,896 | 8.6 | 8.7 | 8.5 |
| 2001/02 | 149,227 | 77,666 | 71,561 | 12,747 | 6,704 | 6,043 | 8.5 | 8.6 | 8.4 |
| 2002/03 | 153,772 | 80,031 | 73,740 | 14,958 | 7,563 | 7,395 | 9.7 | 9.5 | 10.0 |
| 2003/04 | 158,138 | 82,304 | 75,834 | 18,540 | 9,821 | 8,719 | 11.7 | 11.9 | 11.5 |
| 2004/05 | 162,629 | 84,641 | 77,988 | 31,244 | 15,565 | 15,679 | 19.2 | 18.4 | 20.1 |
| 2005/06 | 164,821 | 85,809 | 79,011 | 35,569 | 17,672 | 17,897 | 21.6 | 20.6 | 22.7 |
| 2006/07 | 157,360 | 82,227 | 75,142 | 37,263 | 19,147 | 18,116 | 23.7 | 23.3 | 24.1 |
| 2007/08 | 147,466 | 77,243 | 70,222 | 35,833 | 18,442 | 17,391 | 24.3 | 23.9 | 24.8 |
| 2008/09 | 137,260 | 71,975 | 65,284 | 37,565 | 19,026 | 18,539 | 27.4 | 26.4 | 28.4 |
| 2009/10 | 133,259 | 69,838 | 63,526 | 40,506 | 19,525 | 19,544 | 30.4 | 28.0 | 30.8 |
| 2010/11 | 133,756 | 69,925 | 63,829 | 46,104 | 23,648 | 22,456 | 34.5 | 33.8 | 35.2 |

Table 6. Pre-primary: Net enrolment ratio by year, 1999/2000-2010/11

| Year | Population age-group 5-6 | | | Net enrolment in pre-primary | | | Net enrolment ratio | | |
|---------|--------------------------|--------|--------|------------------------------|--------|--------|---------------------|------|------|
| | T | M | F | T | M | F | T | M | F |
| 1999/00 | 140,537 | 73,143 | 67,394 | 9,471 | 4,907 | 4,564 | 6.7 | 6.7 | 6.8 |
| 2000/01 | 144,817 | 75,371 | 69,446 | 8,898 | 4,684 | 4,214 | 6.1 | 6.2 | 6.1 |
| 2001/02 | 149,227 | 77,666 | 71,561 | 9,160 | 4,828 | 4,332 | 6.1 | 6.2 | 6.1 |
| 2002/03 | 153,772 | 80,031 | 73,740 | 10,605 | 5,266 | 5,339 | 6.9 | 6.6 | 7.2 |
| 2003/04 | 158,138 | 82,304 | 75,834 | 13,189 | 6,826 | 6,363 | 8.3 | 8.3 | 8.4 |
| 2004/05 | 162,629 | 84,641 | 77,988 | 22,167 | 11,098 | 11,069 | 13.6 | 13.1 | 14.2 |
| 2005/06 | 164,821 | 85,809 | 79,011 | 25,052 | 12,294 | 12,758 | 15.2 | 14.3 | 16.1 |
| 2006/07 | 157,360 | 82,227 | 75,142 | 24,993 | 12,864 | 12,129 | 15.9 | 15.6 | 16.1 |
| 2007/08 | 147,466 | 77,243 | 70,222 | 24,597 | 12,686 | 11,911 | 16.7 | 16.4 | 17.0 |
| 2008/09 | 137,260 | 71,975 | 65,284 | 28,141 | 14,274 | 13,867 | 20.5 | 19.8 | 21.2 |
| 2009/10 | 133,259 | 69,838 | 63,526 | 27,163 | 14,071 | 13,092 | 20.4 | 20.1 | 20.6 |
| 2010/11 | 133,756 | 69,925 | 63,829 | 29,990 | 15,404 | 14,586 | 22.4 | 22.0 | 22.9 |



3. Pre-primary teachers

During the academic year 2009/10, there were 1,143 pre-primary teachers in the whole country of whom 644 (56.3%) have professional training. Out of the total pre-primary teachers 476 female and 12 male teachers were without any professional training.

As table 8 indicates almost all (1,119 or 97.9%) teachers in pre-primary schools are female. The percentage of male teachers is fluctuating between 0 and 4 percent from 1991/92 up to the current academic year.

Table 7. Pre-primary level: Gender and teacher's training status by zoba, 2010/11

| Zoba | Total | | Trained | | Not Trained | | Unclassified | |
|--------------|-------------|-------------|------------|------------|-------------|------------|--------------|-----------|
| | T | F | T | F | T | F | T | F |
| Anseba | 168 | 163 | 69 | 66 | 99 | 97 | | |
| Debub | 266 | 262 | 123 | 121 | 103 | 101 | 40 | 40 |
| Deb-Keih-B | 37 | 33 | 12 | 11 | 25 | 22 | | |
| Gash-Barka | 111 | 109 | 70 | 68 | 26 | 26 | 15 | 15 |
| Maekel | 557 | 552 | 319 | 316 | 237 | 235 | | |
| Sem-Keih-B | 76 | 76 | 49 | 49 | 26 | 26 | 1 | 1 |
| Total | 1215 | 1195 | 642 | 631 | 516 | 507 | 56 | 56 |

Table 8. Pre-primary level: Pupil/teacher ratio, 1991/92-2010/11

| Year | Enrolment | | | Teachers | | | Pupil/teacher ratio |
|---------|-----------|--------|--------|----------|----|-------|---------------------|
| | T | M | F | T | M | F | |
| 1991/92 | 6,461 | 3,142 | 3,319 | 201 | 0 | 201 | 32 |
| 1992/93 | 7,031 | 3,426 | 3,605 | 227 | 0 | 227 | 31 |
| 1993/94 | 7,748 | 3,909 | 3,839 | 244 | 1 | 243 | 32 |
| 1994/95 | 8,032 | 4,102 | 3,930 | 256 | 1 | 255 | 31 |
| 1995/96 | 8,180 | 4,201 | 3,979 | 235 | 3 | 232 | 35 |
| 1996/97 | 7,443 | 3,791 | 3,652 | 207 | 3 | 204 | 36 |
| 1997/98 | 9,300 | 4,683 | 4,617 | 239 | 3 | 236 | 39 |
| 1998/99 | 11,581 | 6,168 | 5,413 | 321 | 9 | 312 | 36 |
| 1999/00 | 11,885 | 6,181 | 5,704 | 320 | 6 | 314 | 37 |
| 2000/01 | 12,436 | 6,540 | 5,896 | 326 | 8 | 318 | 38 |
| 2001/02 | 12,747 | 6,704 | 6,043 | 353 | 6 | 347 | 37 |
| 2002/03 | 14,958 | 7,563 | 7,395 | 410 | 19 | 391 | 37 |
| 2003/04 | 18,540 | 9,821 | 8,719 | 492 | 21 | 471 | 38 |
| 2004/05 | 31,244 | 15,565 | 15,679 | 845 | 29 | 816 | 37 |
| 2005/06 | 35,569 | 17,672 | 17,897 | 1,030 | 39 | 991 | 35 |
| 2006/07 | 37,263 | 19,147 | 18,116 | 1,067 | 33 | 1,034 | 35 |
| 2007/08 | 35,833 | 17,391 | 18,442 | 1,062 | 37 | 1,025 | 34 |
| 2008/09 | 37,565 | 19,026 | 18,539 | 1,117 | 32 | 1,085 | 34 |
| 2009/10 | 40,506 | 20,981 | 19,525 | 1,143 | 24 | 1,119 | 36 |
| 2010/11 | 46,104 | 22,456 | 23,648 | 1,215 | 20 | 1,195 | 38 |

In pr-primary level directors are included in teaching staff .

Table 9. Pre-primary: Percentage of female teachers, 1991/92-2010/11

| Year | Teachers | | | Percentage of female teachers |
|---------|----------|----|-------|-------------------------------|
| | T | M | F | |
| 1991/92 | 201 | 0 | 201 | 100.0 |
| 1992/93 | 227 | 0 | 227 | 100.0 |
| 1993/94 | 244 | 1 | 243 | 99.6 |
| 1994/95 | 256 | 1 | 255 | 99.6 |
| 1995/96 | 235 | 3 | 232 | 98.7 |
| 1996/97 | 207 | 3 | 204 | 98.6 |
| 1997/98 | 239 | 3 | 236 | 98.7 |
| 1998/99 | 321 | 9 | 312 | 97.2 |
| 1999/00 | 320 | 6 | 314 | 98.1 |
| 2000/01 | 326 | 8 | 318 | 97.5 |
| 2001/02 | 353 | 6 | 347 | 98.3 |
| 2002/03 | 413 | 19 | 394 | 95.4 |
| 2003/04 | 492 | 21 | 471 | 95.7 |
| 2004/05 | 845 | 29 | 816 | 96.6 |
| 2005/06 | 1,030 | 39 | 991 | 96.2 |
| 2006/07 | 1,067 | 33 | 1,034 | 96.9 |
| 2007/08 | 1,062 | 37 | 1,025 | 96.5 |
| 2008/09 | 1,117 | 32 | 1,085 | 97.1 |
| 2009/10 | 1,143 | 24 | 1,119 | 97.9 |
| 2010/11 | 1,215 | 20 | 1,195 | 98.0 |

V. Elementary level

1. Background

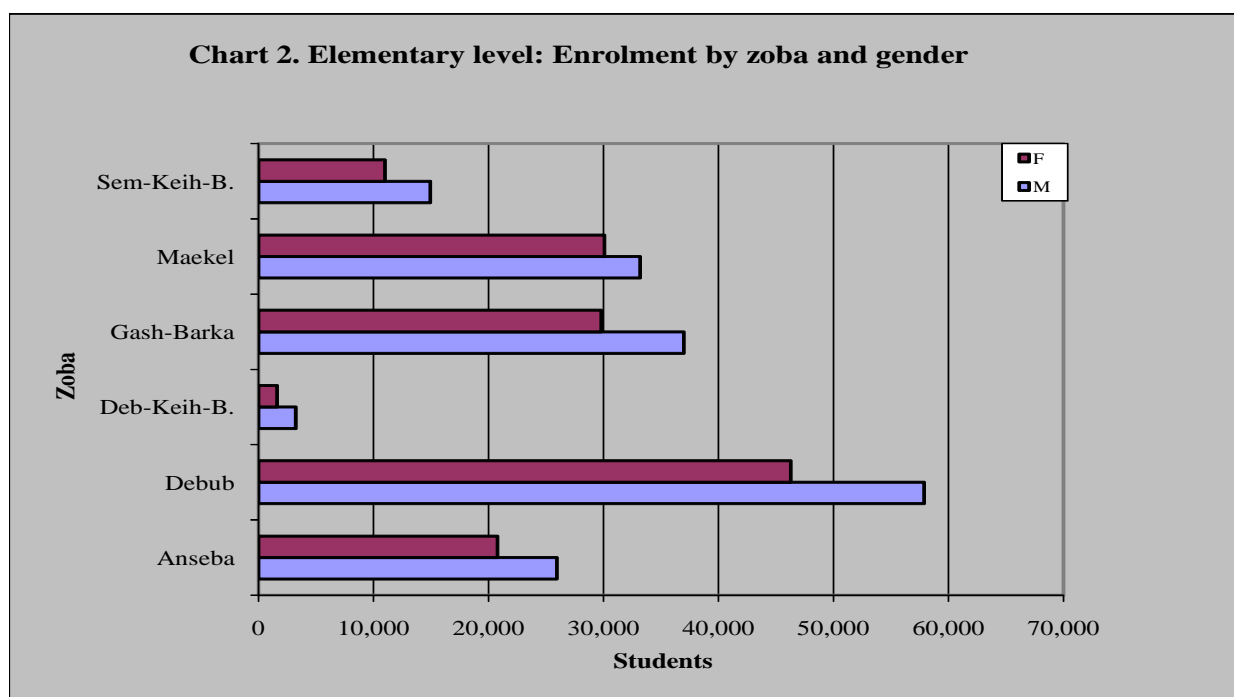
The official school age for elementary level is 7-11 and the duration of stay is 5 years. Education in government schools is free of charge and compulsory. At elementary level medium of instruction is the relative mother tongue.

2. Enrolment

Enrolment in this level for the academic year 2010/11 was 311,737 out of which 139,584 (44.8%) were females. Out of the total enrolment in elementary school, 22,999 (7.4%) were enrolled in non-government schools.

Table 10. Elementary level: Percentage of change by zoba, gender, 2009/10-2010/11

| Zoba | 2009/10 | | | 2010/11 | | | Percentage of change | | |
|--------------|----------------|----------------|----------------|----------------|----------------|----------------|----------------------|------------|------------|
| | T | M | F | T | M | F | T | M | F |
| Anseba | 42,975 | 23,887 | 19,088 | 46,738 | 25,962 | 20,776 | 8.8 | 8.7 | 8.8 |
| Debub | 94,898 | 51,824 | 43,074 | 104,163 | 57,869 | 46,294 | 9.8 | 11.7 | 7.5 |
| Deb-Keih-B. | 4,389 | 2,879 | 1,510 | 4,846 | 3,236 | 1,610 | 10.4 | 12.4 | 6.6 |
| Gash-Barka | 57,090 | 31,419 | 25,671 | 66,779 | 36,979 | 29,800 | 17.0 | 17.7 | 16.1 |
| Makel | 61,876 | 32,481 | 29,395 | 63,272 | 33,175 | 30,097 | 2.3 | 2.1 | 2.4 |
| Sem-Keih-B. | 24,793 | 14,313 | 10,480 | 25,939 | 14,932 | 11,007 | 4.6 | 4.0 | 5.0 |
| Total | 286,021 | 156,803 | 129,218 | 311,737 | 172,153 | 139,584 | 9.0 | 9.8 | 8.0 |



3. Gross admission ratio

Table 11. Elementary level: Gross admission ratio by year, 1991/92-2010/11

| Year | Population of age 7 | | | Admission in grade one | | | Gross admission ratio | | |
|---------|---------------------|--------|--------|------------------------|--------|--------|-----------------------|-------|-------|
| | T | M | F | T | M | F | T | M | F |
| 1991/92 | 55,704 | 28,767 | 26,936 | 46,671 | 25,807 | 20,864 | 83.8 | 89.7 | 77.5 |
| 1992/93 | 57,400 | 29,644 | 27,757 | 46,210 | 26,612 | 19,598 | 80.5 | 89.8 | 70.6 |
| 1993/94 | 59,148 | 30,546 | 28,602 | 45,656 | 25,432 | 20,224 | 77.2 | 83.3 | 70.7 |
| 1994/95 | 59,148 | 31,477 | 29,473 | 44,285 | 24,159 | 20,126 | 74.9 | 76.8 | 68.3 |
| 1995/96 | 62,806 | 32,435 | 30,371 | 46,497 | 26,108 | 20,389 | 74.0 | 80.5 | 67.1 |
| 1996/97 | 64,719 | 33,423 | 31,296 | 41,122 | 22,578 | 18,544 | 63.5 | 67.6 | 59.3 |
| 1997/98 | 66,690 | 34,441 | 32,249 | 50,471 | 28,407 | 22,064 | 75.7 | 82.5 | 68.4 |
| 1998/99 | 68,721 | 35,490 | 33,231 | 57,336 | 31,758 | 25,578 | 83.4 | 89.5 | 77.0 |
| 1999/00 | 70,814 | 36,571 | 34,243 | 68,902 | 38,345 | 30,557 | 97.3 | 104.9 | 89.2 |
| 2000/01 | 72,970 | 37,684 | 35,286 | 72,139 | 39,595 | 32,544 | 98.9 | 105.1 | 92.2 |
| 2001/02 | 75,192 | 38,832 | 36,360 | 74,899 | 41,114 | 33,785 | 99.6 | 105.9 | 92.9 |
| 2002/03 | 77,482 | 40,015 | 37,468 | 76,145 | 41,767 | 34,378 | 98.3 | 104.4 | 91.8 |
| 2003/04 | 79,683 | 41,151 | 38,532 | 68,983 | 38,059 | 30,924 | 86.6 | 92.5 | 80.3 |
| 2004/05 | 81,945 | 42,319 | 39,626 | 69,166 | 37,633 | 31,533 | 84.4 | 88.9 | 79.6 |
| 2005/06 | 83,052 | 42,902 | 40,150 | 60,922 | 32,985 | 27,937 | 73.4 | 76.9 | 69.6 |
| 2006/07 | 82,390 | 42,791 | 39,306 | 52,983 | 28,546 | 24,437 | 64.3 | 66.7 | 62.2 |
| 2007/08 | 78,893 | 41,138 | 37,755 | 51,784 | 28,326 | 23,458 | 65.6 | 68.9 | 62.1 |
| 2008/09 | 73,565 | 38,473 | 35,092 | 56,220 | 30,452 | 25,768 | 76.4 | 79.2 | 73.4 |
| 2009/10 | 69,641 | 36,492 | 33,152 | 59,097 | 31,213 | 27,884 | 84.9 | 85.5 | 84.1 |
| 2010/11 | 65,141 | 34,139 | 31,000 | 87,235 | 47,919 | 39,316 | 133.9 | 140.4 | 126.8 |

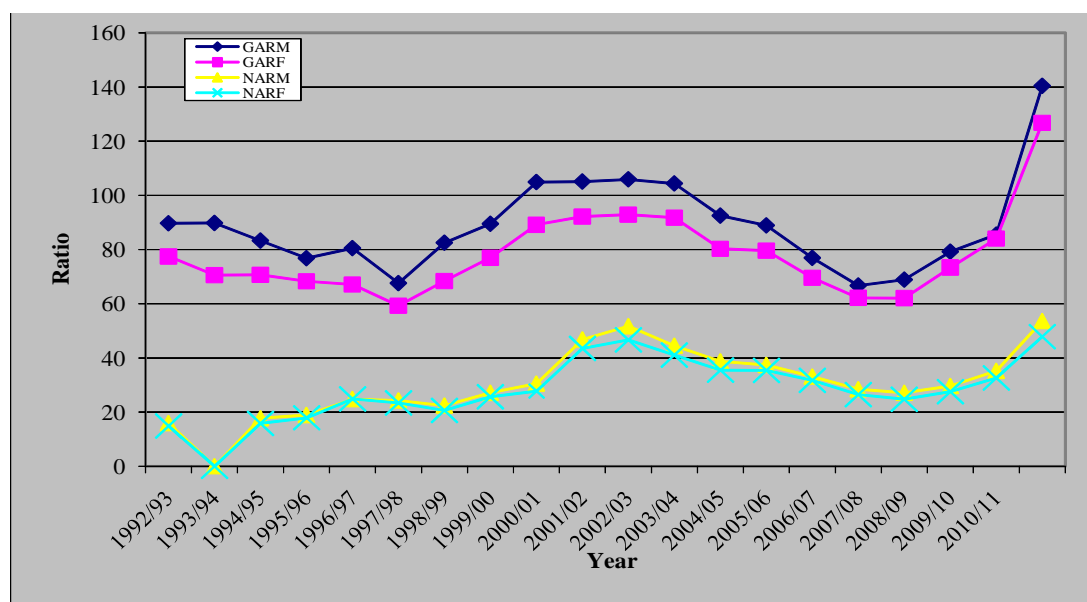
As can be seen in Table 11, the gross admission ratio has been steadily decreasing from 83.8% to 63.5% between the academic year 1991/92 and 1996/97. Then it started to progressively increase from 63.5% to 98.3% between the academic year 1996/97 and 2002/03. Then after it has decreased from 86.6% to 65.6% between the academic year 2003/04 and 2007/08. In 2010/11 academic year gross admission ratio has shown tremendous increment from the previous scholastic year.

4. Net admission ratio

Table 12. Elementary level: Net admission ratio by year, 1991/92-2010/11

| Year | Population of age 7 | | | Admission of age 7 | | | Net admission ratio | | |
|---------|---------------------|--------|--------|--------------------|--------|--------|---------------------|------|------|
| | T | M | F | T | M | F | T | M | F |
| 1991/92 | 55,704 | 28,767 | 26,936 | 8,605 | 4,580 | 4,025 | 15.4 | 15.9 | 14.9 |
| 1992/93 | 57,400 | 29,644 | 27,757 | N.A | NA | NA | N.A | N.A | N.A |
| 1993/94 | 59,148 | 30,546 | 28,602 | 9,947 | 5,392 | 4,555 | 16.8 | 17.7 | 15.9 |
| 1994/95 | 59,148 | 31,477 | 29,473 | 11,227 | 5,949 | 5,278 | 19.0 | 18.9 | 17.9 |
| 1995/96 | 62,806 | 32,435 | 30,371 | 15,612 | 8,053 | 7,559 | 24.9 | 24.8 | 24.9 |
| 1996/97 | 64,719 | 33,423 | 31,296 | 15,469 | 8,132 | 7,337 | 23.9 | 24.3 | 23.4 |
| 1997/98 | 66,690 | 34,441 | 32,249 | 14,370 | 7,723 | 6,647 | 21.5 | 22.4 | 20.6 |
| 1998/99 | 68,721 | 35,490 | 33,231 | 18,140 | 9,608 | 8,532 | 26.4 | 27.1 | 25.7 |
| 1999/00 | 70,814 | 36,571 | 34,243 | 20,674 | 11,169 | 9,505 | 29.2 | 30.5 | 27.8 |
| 2000/01 | 72,970 | 37,684 | 35,286 | 32,977 | 17,632 | 15,345 | 45.2 | 46.8 | 43.5 |
| 2001/02 | 75,192 | 38,832 | 36,360 | 37,071 | 20,094 | 16,977 | 49.3 | 51.7 | 46.7 |
| 2002/03 | 77,482 | 40,015 | 37,468 | 33,199 | 17,810 | 15,389 | 42.8 | 44.5 | 41.1 |
| 2003/04 | 79,683 | 41,151 | 38,532 | 29,568 | 15,906 | 13,662 | 37.1 | 38.7 | 35.5 |
| 2004/05 | 81,945 | 42,319 | 39,626 | 29,866 | 15,833 | 14,033 | 36.4 | 37.4 | 35.4 |
| 2005/06 | 83,052 | 42,902 | 40,150 | 26,923 | 14,203 | 12,720 | 32.4 | 33.1 | 31.7 |
| 2006/07 | 82,390 | 42,791 | 39,306 | 22,577 | 12,145 | 10,432 | 27.4 | 28.4 | 26.5 |
| 2007/08 | 78,893 | 41,138 | 37,755 | 20,502 | 11,157 | 9,345 | 26.0 | 27.1 | 24.8 |
| 2008/09 | 73,565 | 38,473 | 35,092 | 21,071 | 11,385 | 9,686 | 28.6 | 29.6 | 27.6 |
| 2009/10 | 69,641 | 36,492 | 33,152 | 23,627 | 12,836 | 10,791 | 33.9 | 35.2 | 32.6 |
| 2010/11 | 65,141 | 34,139 | 31,000 | 33,135 | 18,286 | 14,849 | 50.9 | 53.6 | 47.9 |

As can be seen from table 12, the net admission ratio has increased yearly between the successive academic years of 1991/92-2001/02 except in the academic year 1997/98, and it has decreased yearly between the successive academic years of 2002/03-2007/08. In the academic year 2010/11 net admission has increased by 40.2% from the previous academic year.



5. Over-aged pupils in grade one.

Table 13. Elementary level: Percentage of over-age pupils in grade one, 1991/92-2010/11

| Year | Enrolment in grade 1 | | | Over-age enrolment in Grade 1 | | | % of over-age in grade 1 | | |
|---------|----------------------|--------|--------|-------------------------------|--------|--------|--------------------------|------|------|
| | T | M | F | T | M | F | T | M | F |
| 1991/92 | 67,550 | 36,867 | 30,683 | 52,427 | 28,919 | 23,508 | 77.6 | 78.4 | 76.6 |
| 1992/93 | 68,770 | 38,291 | 30,479 | N.A | NA | NA | NA | NA | NA |
| 1993/94 | 64,527 | 35,101 | 29,426 | 48,963 | 26,886 | 22,075 | 75.9 | 76.6 | 75.0 |
| 1994/95 | 62,914 | 33,793 | 29,121 | 46,192 | 25,043 | 21,147 | 73.4 | 74.1 | 72.6 |
| 1995/96 | 65,110 | 34,869 | 30,241 | 47,320 | 25,600 | 21,718 | 72.7 | 73.4 | 71.8 |
| 1996/97 | 58,841 | 31,820 | 27,021 | 40,404 | 22,032 | 18,372 | 68.7 | 69.2 | 68.0 |
| 1997/98 | 68,388 | 38,104 | 30,284 | 48,649 | 27,496 | 21,153 | 71.1 | 72.2 | 69.8 |
| 1998/99 | 75,340 | 41,586 | 33,754 | 50,409 | 28,365 | 22,044 | 66.9 | 68.2 | 65.3 |
| 1999/00 | 91,037 | 50,459 | 40,576 | 59,351 | 33,493 | 25,858 | 65.2 | 66.4 | 63.7 |
| 2000/01 | 88,045 | 47,907 | 40,138 | 45,357 | 25,146 | 20,211 | 51.5 | 52.5 | 50.4 |
| 2001/02 | 97,678 | 53,409 | 44,269 | 48,885 | 27,137 | 21,748 | 50.0 | 50.9 | 49.1 |
| 2002/03 | 101,496 | 55,186 | 46,310 | 53,456 | 28,270 | 25,186 | 52.7 | 51.2 | 54.4 |
| 2003/04 | 99,216 | 54,309 | 44,907 | 46,542 | 26,229 | 20,313 | 46.9 | 48.3 | 45.2 |
| 2004/05 | 89,524 | 48,902 | 40,622 | 36,585 | 20,831 | 15,754 | 40.9 | 42.6 | 38.8 |
| 2005/06 | 73,222 | 39,781 | 33,441 | 27,184 | 15,534 | 11,650 | 37.1 | 39.1 | 34.8 |
| 2006/07 | 62,486 | 33,732 | 28,754 | 36,729 | 19,783 | 16,946 | 58.8 | 58.6 | 58.9 |
| 2007/08 | 60,940 | 33,506 | 27,434 | 16,086 | 9,275 | 6,811 | 26.4 | 27.7 | 24.8 |
| 2008/09 | 64,665 | 35,217 | 29,448 | 15,837 | 9,157 | 6,680 | 24.5 | 26.0 | 22.7 |
| 2009/10 | 69,624 | 37,899 | 31,725 | 16,435 | 9,397 | 7,038 | 23.6 | 24.8 | 22.2 |
| 2010/11 | 87,235 | 47,919 | 39,316 | 20,310 | 11,482 | 8,828 | 23.3 | 24.0 | 22.5 |

Table 13 indicates that the efforts made to expand access and is significantly lower percentage of over aged enrolment in grade one to its minimal level.

6. Under-aged pupils in grade one.

Table 14. Elementary level: Percentage of under-age pupils in grade one, 1991/92-2010/11

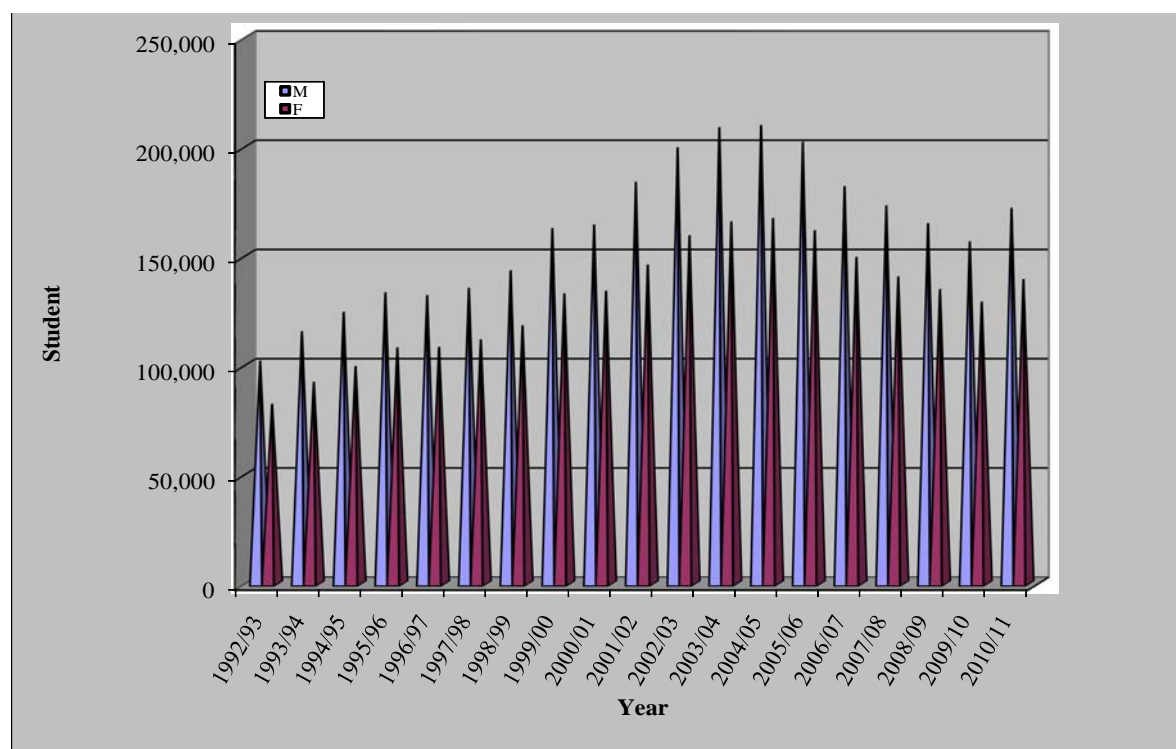
| Year | Enrolment in Grade 1 | | | Under-age enrolment grade1 | | | Percentage of under-age | | |
|---------|----------------------|--------|--------|----------------------------|--------|--------|-------------------------|------|------|
| | T | M | F | T | M | F | T | M | F |
| 1991/92 | 67,550 | 36,867 | 30,683 | 2,661 | 1,405 | 1,256 | 3.9 | 3.8 | 4.1 |
| 1992/93 | 68,770 | 38,291 | 30,479 | 1,906 | 962 | 944 | 2.8 | 2.5 | 3.1 |
| 1993/94 | 64,527 | 35,101 | 29,426 | 1,527 | 778 | 749 | 2.3 | 2.2 | 2.5 |
| 1994/95 | 62,914 | 33,793 | 29,121 | 865 | 447 | 418 | 1.4 | 1.3 | 1.4 |
| 1995/96 | 65,110 | 34,869 | 30,241 | 880 | 445 | 435 | 1.4 | 1.3 | 1.4 |
| 1996/97 | 58,841 | 31,820 | 27,021 | 1,135 | 588 | 547 | 1.9 | 1.8 | 2.0 |
| 1997/98 | 68,388 | 38,104 | 30,284 | 1,186 | 637 | 549 | 1.7 | 1.7 | 1.8 |
| 1998/99 | 75,340 | 41,586 | 33,754 | 3,497 | 1,814 | 1,683 | 4.6 | 4.4 | 5.0 |
| 1999/00 | 91,037 | 50,459 | 40,576 | 6,295 | 3,294 | 3,001 | 6.9 | 6.5 | 7.4 |
| 2000/01 | 88,045 | 47,907 | 40,138 | 9,693 | 5,112 | 4,581 | 11.0 | 10.7 | 11.4 |
| 2001/02 | 97,678 | 53,409 | 44,269 | 11,722 | 6,178 | 5,544 | 12.0 | 11.6 | 12.5 |
| 2002/03 | 101,496 | 55,186 | 46,310 | 10,990 | 5,704 | 5,286 | 10.8 | 10.3 | 11.4 |
| 2003/04 | 99,216 | 54,309 | 44,907 | 13,682 | 7,062 | 6,620 | 13.8 | 13.0 | 14.7 |
| 2004/05 | 89,524 | 48,902 | 40,622 | 15,520 | 8,090 | 7,430 | 17.3 | 16.5 | 18.3 |
| 2005/06 | 73,222 | 39,781 | 33,441 | 14,492 | 7,423 | 7,069 | 19.8 | 18.7 | 21.1 |
| 2006/07 | 62,486 | 33,732 | 28,754 | 19,371 | 10,083 | 9,288 | 31.0 | 29.9 | 32.3 |
| 2007/08 | 60,940 | 33,506 | 27,434 | 20,349 | 10,821 | 9,528 | 33.4 | 32.3 | 34.7 |
| 2008/09 | 64,665 | 35,217 | 29,448 | 23,937 | 12,523 | 11,414 | 37.0 | 35.6 | 38.8 |
| 2009/10 | 69,624 | 37,899 | 31,725 | 26,164 | 13,644 | 12,520 | 37.6 | 36.0 | 39.5 |
| 2010/11 | 87,235 | 47,919 | 39,316 | 33,790 | 18,151 | 15,639 | 38.7 | 37.9 | 39.8 |

From the academic year 1991/92 up to the academic year 1997/98 except for the academic year 1996/97 enrolment of under-aged was continuously decreasing. This was mainly because MoE regulations in those years did not allow children under 7 to be enrolled in elementary schools. Starting from the academic year 1997/98 the enrolment of under-aged children has been increasing continuously except for the academic year 2002/03. This is because age 6 students are allowed to attend in grade 1.

7. Children out of school

Table 15. Enrolment level: Percentage of children out of school, 1991/92-2010/11

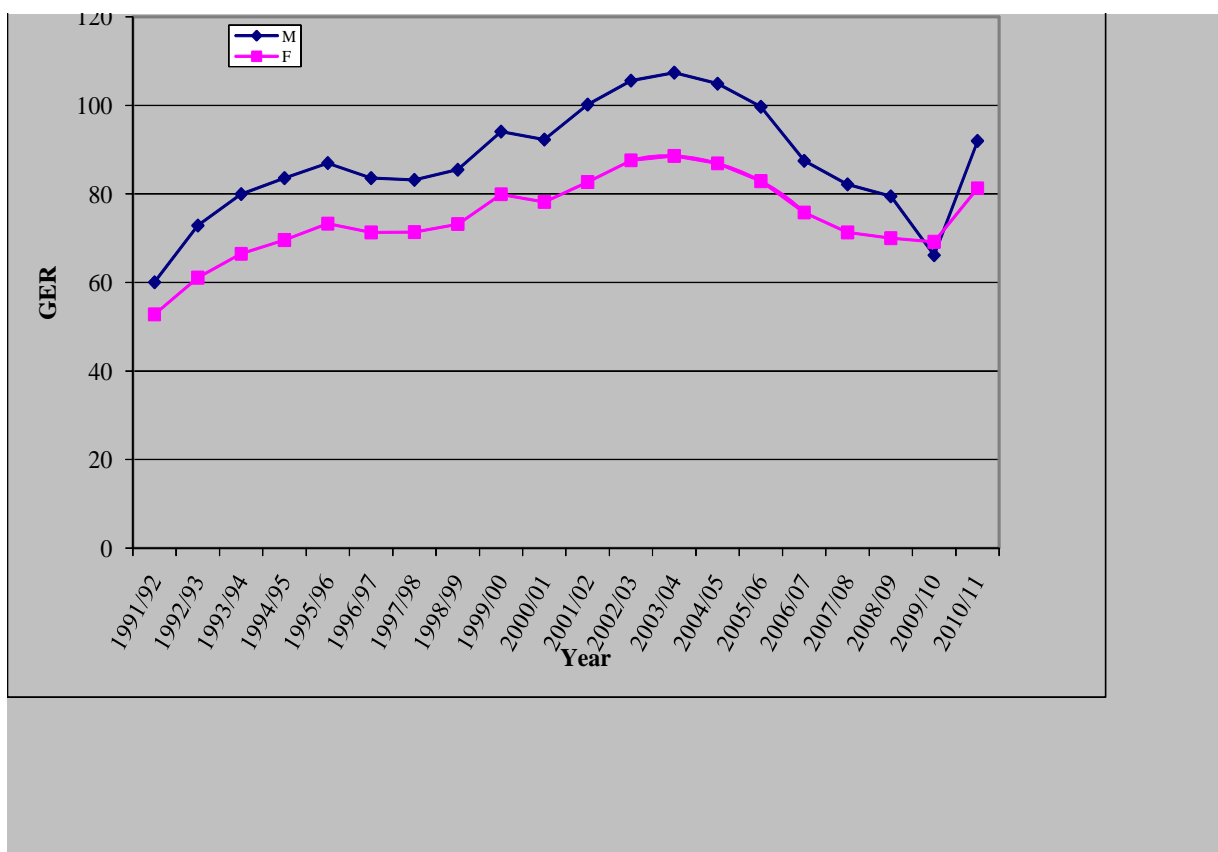
| Year | Population of 7-11. | | | Net enrolment 7-11. | | | NER | Number of children out of school 7-11 | | | Percentage of children out of School 7-11 |
|---------|---------------------|---------|---------|---------------------|---------|---------|------|---------------------------------------|--------|--------|---|
| | T | M | F | T | M | F | | T | M | F | |
| 1991/92 | 267,124 | 136,118 | 131,006 | 93,087 | 48,397 | 44,690 | 34.8 | 174,037 | 87,721 | 86,316 | 65.2 |
| 1992/93 | 275,259 | 140,263 | 134,996 | 109,111 | 57,126 | 51,985 | 39.6 | 166,148 | 83,137 | 83,011 | 60.4 |
| 1993/94 | 283,642 | 144,535 | 139,107 | 113,612 | 59,645 | 53,967 | 40.1 | 170,030 | 84,890 | 85,140 | 59.9 |
| 1994/95 | 292,280 | 148,937 | 143,343 | 122,084 | 64,098 | 57,986 | 41.8 | 170,196 | 84,839 | 85,357 | 58.2 |
| 1995/96 | 301,181 | 153,473 | 147,709 | 133,496 | 69,958 | 63,538 | 44.3 | 167,685 | 83,515 | 84,171 | 55.7 |
| 1996/97 | 310,354 | 158,147 | 152,207 | 136,943 | 72,073 | 64,870 | 44.1 | 173,411 | 86,074 | 87,337 | 55.9 |
| 1997/98 | 319,805 | 162,963 | 156,843 | 150,751 | 80,212 | 70,539 | 47.1 | 169,054 | 82,751 | 86,304 | 52.9 |
| 1998/99 | 329,545 | 167,926 | 161,619 | 166,879 | 89,556 | 77,323 | 50.6 | 162,666 | 78,370 | 84,296 | 49.4 |
| 1999/00 | 339,581 | 173,040 | 166,541 | 194,963 | 104,748 | 90,215 | 57.4 | 144,618 | 68,292 | 76,326 | 42.6 |
| 2000/01 | 349,923 | 178,310 | 171,613 | 205,831 | 111,022 | 94,809 | 58.8 | 144,092 | 67,288 | 76,804 | 41.2 |
| 2001/02 | 360,579 | 183,740 | 176,839 | 232,030 | 125,941 | 106,089 | 64.3 | 128,549 | 57,799 | 70,750 | 35.7 |
| 2002/03 | 371,561 | 189,336 | 182,225 | 256,360 | 139,072 | 117,288 | 69.0 | 115,201 | 50,264 | 64,937 | 31.0 |
| 2003/04 | 382,111 | 194,712 | 187,399 | 269,326 | 146,379 | 122,947 | 70.5 | 112,785 | 48,333 | 64,452 | 29.5 |
| 2004/05 | 392,962 | 200,241 | 192,721 | 276,815 | 149,916 | 126,899 | 70.4 | 116,147 | 50,325 | 65,822 | 29.6 |
| 2005/06 | 398,350 | 202,996 | 195,355 | 272,401 | 146,588 | 125,813 | 68.4 | 125,949 | 56,408 | 69,542 | 35.6 |
| 2006/07 | 405,681 | 208,224 | 197,483 | 248,782 | 133,238 | 115,544 | 61.3 | 156,899 | 74,986 | 81,939 | 38.7 |
| 2007/08 | 408,392 | 210,839 | 197,553 | 233,590 | 125,816 | 107,774 | 57.2 | 174,802 | 85,023 | 89,779 | 42.8 |
| 2008/09 | 400,601 | 207,792 | 192,807 | 221,358 | 119,193 | 102,165 | 55.3 | 179,243 | 88,599 | 90,642 | 44.7 |
| 2009/10 | 389,401 | 202,728 | 186,692 | 214,592 | 115,928 | 98,664 | 55.1 | 174,809 | 86,800 | 88,028 | 44.9 |
| 2010/11 | 358,801 | 187,200 | 171,594 | 237,808 | 129,136 | 108,672 | 66.3 | 120,993 | 58,064 | 62,922 | 33.7 |



8. Gross enrolment ratio

Table 16. Elementary level: Gross enrolment ratio by year, 1991/92-2010/11

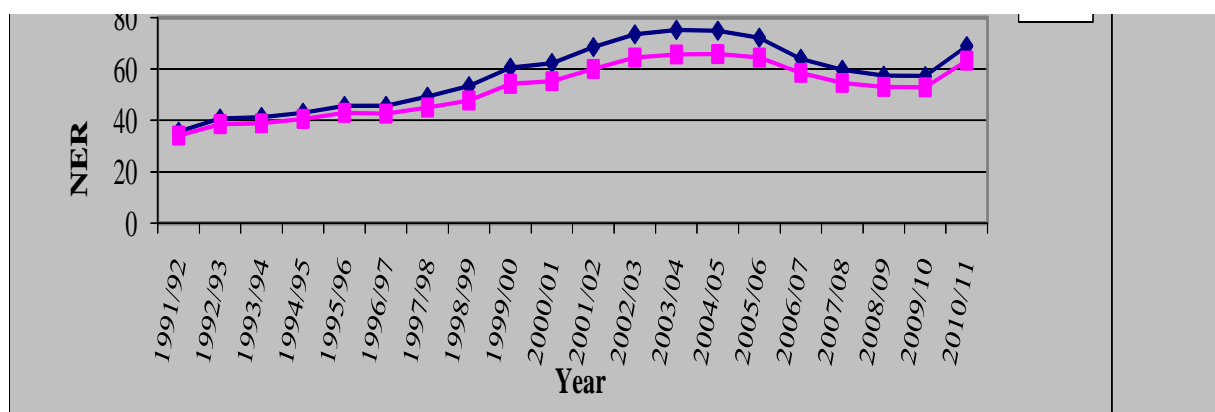
| Year | Total Population 7-11 | | | Enrolment in elementary level | | | Gross enrolment ratio | | |
|---------|-----------------------|---------|---------|-------------------------------|---------|---------|-----------------------|-------|------|
| | T | M | F | T | M | F | T | M | F |
| 1991/92 | 267,124 | 136,118 | 131,006 | 150,982 | 81,746 | 69,236 | 56.5 | 60.1 | 52.8 |
| 1992/93 | 275,259 | 140,263 | 134,996 | 184,656 | 102,235 | 82,421 | 67.1 | 72.9 | 61.1 |
| 1993/94 | 283,642 | 144,535 | 139,107 | 208,199 | 115,663 | 92,536 | 73.4 | 80.0 | 66.5 |
| 1994/95 | 292,280 | 148,937 | 143,343 | 224,287 | 124,544 | 99,743 | 76.7 | 83.6 | 69.6 |
| 1995/96 | 301,181 | 153,473 | 147,709 | 241,725 | 133,471 | 108,254 | 80.3 | 87.0 | 73.3 |
| 1996/97 | 310,354 | 158,147 | 152,207 | 240,737 | 132,250 | 108,487 | 77.6 | 83.6 | 71.3 |
| 1997/98 | 319,805 | 162,963 | 156,843 | 247,499 | 135,569 | 111,930 | 77.4 | 83.2 | 71.4 |
| 1998/99 | 329,545 | 167,926 | 161,619 | 261,963 | 143,578 | 118,385 | 79.5 | 85.5 | 73.2 |
| 1999/00 | 339,581 | 173,040 | 166,541 | 295,941 | 162,896 | 133,045 | 87.1 | 94.1 | 79.9 |
| 2000/01 | 349,923 | 178,310 | 171,613 | 298,691 | 164,523 | 134,168 | 85.4 | 92.3 | 78.2 |
| 2001/02 | 360,579 | 183,740 | 176,839 | 330,278 | 184,060 | 146,218 | 91.6 | 100.2 | 82.7 |
| 2002/03 | 371,561 | 189,336 | 182,225 | 359,423 | 199,860 | 159,563 | 96.7 | 105.6 | 87.6 |
| 2003/04 | 382,111 | 194,712 | 187,399 | 374,997 | 209,043 | 165,954 | 98.1 | 107.4 | 88.6 |
| 2004/05 | 392,962 | 200,241 | 192,721 | 377,512 | 210,061 | 167,451 | 96.1 | 104.9 | 86.9 |
| 2005/06 | 398,350 | 202,996 | 195,355 | 364,263 | 202,388 | 161,875 | 92.1 | 99.7 | 82.9 |
| 2006/07 | 405,681 | 208,224 | 197,483 | 331,855 | 182,100 | 149,755 | 81.8 | 87.5 | 75.8 |
| 2007/08 | 408,392 | 210,839 | 197,553 | 314,034 | 173,242 | 140,792 | 76.9 | 82.2 | 71.3 |
| 2008/09 | 400,601 | 207,792 | 192,807 | 300,129 | 165,111 | 135,018 | 74.9 | 79.5 | 70.0 |
| 2009/10 | 389,401 | 202,728 | 186,692 | 286,021 | 156,803 | 129,218 | 73.5 | 66.2 | 69.2 |
| 2010/11 | 358,801 | 187,200 | 171,594 | 311,737 | 172,153 | 139,584 | 86.9 | 92.0 | 81.3 |



9. Net enrolment ratio

Table 17. Elementary level: Net enrolment ratio by year: 1991/92-2010/11

| Year | Population age 7-11. | | | Net enrolment | | | Net enrolment ratio % | | |
|---------|----------------------|---------|---------|---------------|---------|---------|-----------------------|------|------|
| | T | M | F | T | M | F | T | M | F |
| 1991/92 | 267,124 | 136,118 | 131,006 | 93,087 | 48,397 | 44,690 | 34.8 | 35.6 | 34.1 |
| 1992/93 | 275,259 | 140,263 | 134,996 | 109,111 | 57,126 | 51,985 | 39.6 | 40.7 | 38.5 |
| 1993/94 | 283,642 | 144,535 | 139,107 | 113,612 | 59,645 | 53,967 | 40.1 | 41.3 | 38.8 |
| 1994/95 | 292,280 | 148,937 | 143,343 | 122,084 | 64,098 | 57,986 | 41.8 | 43.0 | 40.5 |
| 1995/96 | 301,181 | 153,473 | 147,709 | 133,496 | 69,958 | 63,538 | 44.3 | 45.6 | 43.0 |
| 1996/97 | 310,354 | 158,147 | 152,207 | 136,943 | 72,073 | 64,870 | 44.1 | 45.6 | 42.6 |
| 1997/98 | 319,805 | 162,963 | 156,843 | 150,751 | 80,212 | 70,539 | 47.1 | 49.2 | 45.0 |
| 1998/99 | 329,545 | 167,926 | 161,619 | 166,879 | 89,556 | 77,323 | 50.6 | 53.3 | 47.8 |
| 1999/00 | 339,581 | 173,040 | 166,541 | 194,963 | 104,743 | 90,215 | 57.4 | 60.5 | 54.2 |
| 2000/01 | 349,923 | 178,310 | 171,613 | 205,831 | 111,022 | 94,809 | 58.8 | 62.3 | 55.2 |
| 2001/02 | 360,579 | 183,740 | 176,839 | 232,030 | 125,941 | 106,089 | 64.3 | 68.5 | 60.0 |
| 2002/03 | 371,561 | 189,336 | 182,225 | 256,360 | 139,072 | 117,288 | 69.0 | 73.5 | 64.4 |
| 2003/04 | 382,111 | 194,712 | 187,399 | 269,326 | 146,379 | 122,947 | 70.5 | 75.2 | 65.6 |
| 2004/05 | 392,962 | 200,241 | 192,721 | 276,815 | 149,916 | 126,899 | 70.4 | 74.9 | 65.8 |
| 2005/06 | 398,350 | 202,996 | 195,355 | 272,401 | 146,588 | 125,813 | 68.4 | 72.2 | 64.4 |
| 2006/07 | 405,681 | 208,224 | 197,483 | 248,782 | 133,238 | 115,544 | 61.3 | 64.0 | 58.5 |
| 2007/08 | 408,392 | 210,839 | 197,553 | 233,590 | 125,816 | 107,774 | 57.2 | 59.7 | 54.6 |
| 2008/09 | 400,601 | 207,792 | 192,807 | 221,358 | 119,193 | 102,165 | 55.3 | 57.4 | 53.0 |
| 2009/10 | 389,401 | 202,728 | 186,692 | 214,592 | 115,928 | 98,664 | 55.1 | 57.2 | 52.8 |
| 2010/11 | 358,801 | 187,200 | 171,594 | 237,808 | 129,136 | 108,672 | 66.3 | 69.0 | 63.3 |



10. Percentage of repeaters

Table 18. Elementary level: Percentage of repeaters by gender and year, 1991/92-2009/10

| Year | Enrolment | | | Repeaters | | | Percentage of repeaters | | |
|---------|-----------|---------|---------|-----------|--------|--------|-------------------------|-------|------|
| | T | M | F | T | M | F | T | M | F |
| 1991/92 | 150,982 | 81,746 | 69,236 | N. A. | N.A. | N. A. | N.A. | N. A. | N.A. |
| 1992/93 | 184,656 | 102,235 | 82,421 | 47,139 | 23,289 | 23,850 | 25.5 | 22.8 | 28.9 |
| 1993/94 | 208,199 | 115,663 | 92,536 | 41,694 | 20,632 | 21,062 | 20.0 | 17.8 | 22.8 |
| 1994/95 | 224,287 | 124,544 | 99,743 | 42,426 | 21,177 | 21,249 | 18.9 | 17.0 | 21.3 |
| 1995/96 | 241,725 | 133,471 | 108,254 | 49,172 | 24,470 | 24,702 | 20.3 | 18.3 | 22.8 |
| 1996/97 | 240,737 | 132,250 | 108,487 | 49,246 | 25,006 | 24,240 | 20.5 | 18.9 | 22.3 |
| 1997/98 | 247,499 | 135,569 | 111,930 | 56,157 | 28,613 | 27,544 | 22.7 | 21.1 | 24.6 |
| 1998/99 | 261,963 | 143,578 | 118,385 | 50,820 | 26,168 | 24,652 | 19.4 | 18.2 | 20.8 |
| 1999/00 | 295,941 | 162,896 | 133,045 | 57,366 | 30,798 | 26,568 | 19.4 | 18.9 | 20.0 |
| 2000/01 | 298,691 | 164,523 | 134,168 | 41,387 | 22,499 | 18,888 | 13.9 | 13.7 | 14.1 |
| 2001/02 | 330,278 | 184,060 | 146,218 | 47,249 | 21,005 | 26,244 | 14.3 | 11.4 | 17.9 |
| 2002/03 | 359,399 | 199,842 | 159,557 | 73,114 | 39,485 | 33,629 | 20.3 | 19.8 | 21.1 |
| 2003/04 | 374,997 | 209,043 | 165,954 | 80,020 | 43,208 | 36,812 | 21.3 | 20.7 | 22.2 |
| 2004/05 | 377,512 | 210,061 | 167,451 | 48,629 | 27,373 | 21,256 | 12.9 | 13.0 | 12.7 |
| 2005/06 | 364,263 | 202,388 | 161,875 | 49,923 | 28,068 | 21,858 | 13.7 | 13.9 | 13.5 |
| 2006/07 | 331,855 | 182,100 | 149,755 | 48,443 | 27,213 | 21,230 | 14.6 | 14.9 | 14.2 |
| 2007/08 | 314,034 | 173,242 | 140,792 | 48,393 | 27,773 | 20,620 | 15.4 | 16.0 | 14.6 |
| 2008/09 | 300,129 | 165,111 | 135,018 | 41,029 | 23,757 | 17,272 | 13.7 | 14.4 | 12.8 |
| 2009/10 | 286,021 | 156,803 | 129,218 | 37,829 | 22,623 | 15,206 | 13.2 | 14.4 | 11.8 |
| 2010/11 | 311,737 | 172,153 | 139,584 | 35,280 | 20,927 | 14,353 | 11.3 | 12.2 | 10.3 |

N.B Repeaters refer to those those who were repeating the same grade during 2010/11

11. Disparities among zobas

Table 19. Elementary level: Deviation from the national GER by zoba, 2010/11

| Zoba | Population age 7-11 | | | Gross enrolment | | | GER | | | Deviation from national ratio | | |
|--------------|---------------------|----------------|----------------|-----------------|----------------|----------------|-------------|-------------|-------------|-------------------------------|------------|------------|
| | T | M | F | T | M | F | T | M | F | T | M | F |
| Anseba | 51,229 | 27,178 | 24,087 | 46,738 | 25,962 | 20,776 | 91.2 | 95.5 | 86.3 | 4.3 | 3.7 | 4.8 |
| Debub | 95,098 | 49,397 | 45,682 | 104,163 | 57,869 | 46,294 | 109.5 | 117.2 | 101.3 | 22.6 | 25.4 | 19.8 |
| Deb-Keih-B | 8,569 | 4,416 | 4,148 | 4,846 | 3,236 | 1,610 | 56.6 | 73.3 | 38.8 | -30.3 | -18.5 | -42.7 |
| Gash Barka | 86,539 | 46,011 | 40,596 | 66,779 | 36,979 | 29,800 | 77.2 | 80.4 | 73.4 | -9.7 | -11.4 | -8.1 |
| Maekel | 73,224 | 37,259 | 35,886 | 63,272 | 33,175 | 30,097 | 86.4 | 89.0 | 83.9 | -0.5 | -2.8 | 2.4 |
| Sem-Keih-B | 44,142 | 23,361 | 20,807 | 25,939 | 14,932 | 11,007 | 58.8 | 63.9 | 52.9 | -28.1 | -27.9 | -28.6 |
| Total | 358,801 | 187,200 | 171,594 | 311,737 | 172,153 | 139,584 | 86.9 | 92.0 | 81.3 | 0.0 | 0.0 | 0.0 |

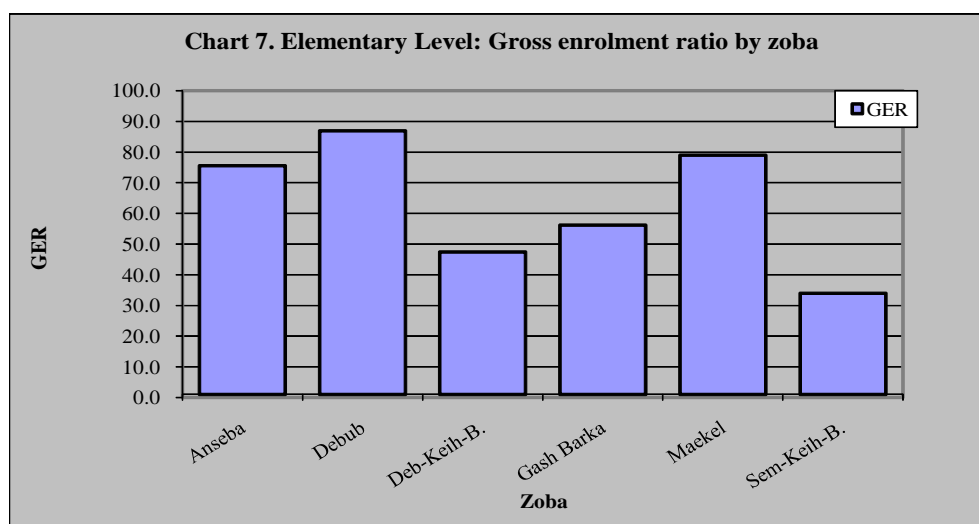


Table 20. Elementary level: Deviation from the national NER by zoba, 2010/11

| Zoba | Population of age 7-11 | | | Net enrolment | | | NER | | | Deviation from national NER | | |
|-------------------|------------------------|----------------|----------------|----------------|----------------|----------------|-------------|-------------|-------------|-----------------------------|------------|------------|
| | T | M | F | T | M | F | T | M | F | T | M | F |
| Anseba | 51,229 | 27,178 | 24,087 | 35,737 | 19,558 | 16,179 | 69.8 | 72.0 | 67.2 | 3.5 | 3.2 | 3.7 |
| Debub | 95,098 | 49,397 | 45,682 | 77,272 | 42,135 | 35,137 | 81.3 | 85.3 | 76.9 | 15.0 | 16.5 | 13.4 |
| Deb-Keih-B | 8,569 | 4,416 | 4,148 | 3,690 | 2,418 | 1,272 | 43.1 | 54.8 | 30.7 | -23.2 | -14.0 | -32.8 |
| Gash-Barka | 86,539 | 46,011 | 40,596 | 52,031 | 28,289 | 23,742 | 60.1 | 61.5 | 58.5 | -6.2 | -7.3 | -5.0 |
| Maekel | 73,224 | 37,259 | 35,886 | 49,271 | 25,423 | 23,848 | 67.3 | 68.2 | 66.5 | 1.0 | -0.6 | 3.0 |
| Sem-Keih-B | 44,142 | 23,361 | 20,807 | 19,807 | 11,313 | 8,494 | 44.9 | 48.4 | 40.8 | -21.4 | -20.4 | -22.7 |
| Total | 358,801 | 187,200 | 171,594 | 237,808 | 129,136 | 108,672 | 66.3 | 69.0 | 63.3 | 0.0 | 0.0 | 0.0 |

VI. Middle level

1. Background

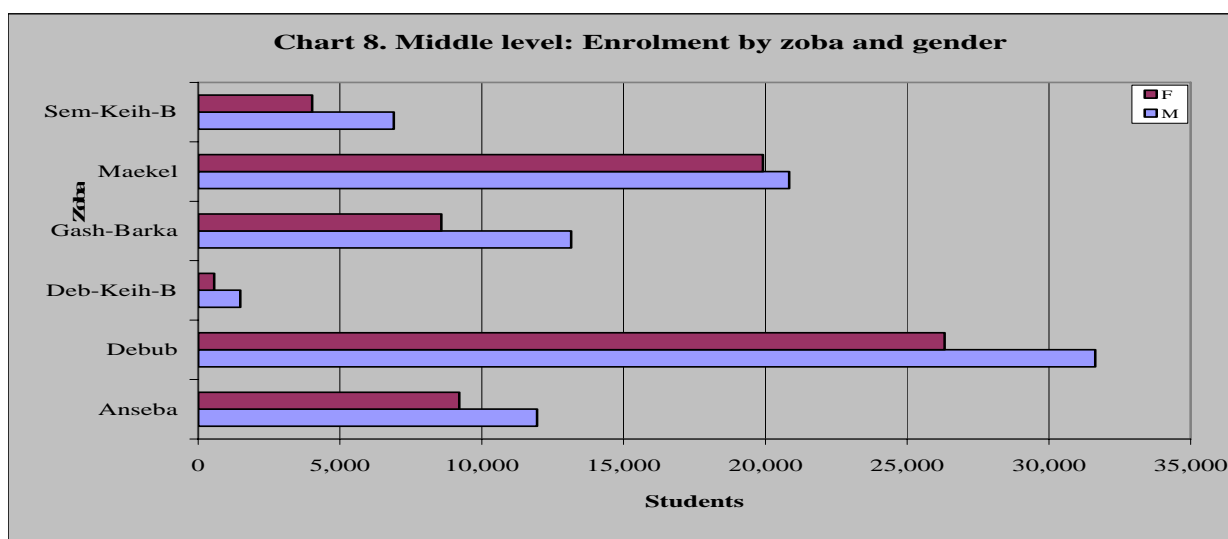
The duration of Middle level is three years (Grades 6, 7 and 8). It is the second level of the compulsory basic education. English is the language of instruction in this level. The official School age is 12-14.

2. Enrolment

Enrolment in this level for the academic year 2010/11 was 154,527. Female enrolment constitutes 68,588 (44.4.0%) of the total number. Non-government enrolment in this level is 8,672 (5.6%)

Table 21. Middle level: Percentage of change by zoba and gender, 2010/11

| Zoba | 2009/10 | | | 2010/11 | | | Percentage of change | | |
|-------------------|----------------|---------------|---------------|----------------|---------------|---------------|----------------------|------------|------------|
| | T | M | F | T | M | F | T | M | F |
| Anseba | 20,096 | 11,360 | 8,736 | 21,150 | 11,945 | 9,205 | 5.2 | 5.1 | 5.4 |
| Debub | 56,366 | 31,170 | 25,196 | 57,955 | 31,635 | 26,320 | 2.8 | 1.5 | 4.5 |
| Deb-Keih-B | 1,963 | 1,434 | 529 | 2,041 | 1,479 | 562 | 4.0 | 3.1 | 6.2 |
| Gash-Barka | 21,214 | 12,898 | 8,316 | 21,716 | 13,146 | 8,570 | 2.4 | 1.9 | 3.1 |
| Maekel | 42,010 | 21,403 | 20,607 | 40,753 | 20,841 | 19,912 | -3.0 | -2.6 | -3.4 |
| Sem-Keih-B | 10,053 | 6,507 | 3,546 | 10,912 | 6,893 | 4,019 | 8.5 | 5.9 | 13.3 |
| Totals | 151,702 | 84,772 | 66,930 | 154,527 | 85,939 | 68,588 | 1.9 | 1.4 | 2.5 |



3. Gross enrolment ratio

Table 22. Middle level: Gross enrolment ratio by year, 1991/92-2010/11

| Year | Population 12-13 | | | Gross Enrolment | | | Gross enrolment ratio | | |
|---------|------------------|---------|---------|-----------------|--------|--------|-----------------------|------|------|
| | T | M | F | T | M | F | T | M | F |
| 1991/92 | 93,113 | 46,436 | 46,678 | 27,917 | 14,414 | 13,503 | 30.0 | 31.0 | 28.9 |
| 1992/93 | 95,949 | 47,850 | 48,099 | 28,431 | 15,052 | 13,379 | 29.6 | 31.5 | 27.8 |
| 1993/94 | 98,871 | 49,307 | 49,564 | 32,781 | 18,129 | 14,652 | 33.2 | 36.8 | 29.6 |
| 1994/95 | 101,882 | 50,809 | 51,073 | 34,995 | 19,310 | 15,685 | 34.3 | 38.0 | 30.7 |
| 1995/96 | 104,985 | 52,356 | 52,629 | 39,751 | 21,648 | 18,103 | 37.9 | 41.3 | 34.4 |
| 1996/97 | 108,182 | 53,951 | 54,232 | 47,460 | 26,739 | 20,721 | 43.9 | 49.6 | 38.2 |
| 1997/98 | 111,477 | 55,594 | 55,883 | 57,152 | 32,998 | 24,154 | 51.3 | 59.4 | 43.2 |
| 1998/99 | 114,872 | 57,287 | 57,585 | 67,021 | 37,731 | 29,290 | 58.3 | 65.9 | 50.9 |
| 1999/00 | 118,370 | 59,031 | 59,339 | 74,317 | 41,033 | 33,284 | 62.8 | 69.5 | 56.1 |
| 2000/01 | 121,975 | 60,829 | 61,146 | 76,564 | 41,457 | 35,107 | 62.8 | 68.2 | 57.4 |
| 2001/02 | 125,690 | 62,682 | 63,008 | 80,882 | 46,215 | 34,667 | 64.4 | 73.7 | 55.0 |
| 2002/03 | 129,518 | 64,591 | 64,927 | 87,019 | 50,138 | 36,881 | 67.2 | 77.6 | 56.8 |
| | Population 12-14 | | | Gross Enrolment | | | Gross enrolment ratio | | |
| 2003/04 | 194,394 | 97,287 | 97,107 | 122,966 | 73,742 | 49,224 | 63.3 | 75.8 | 50.7 |
| 2004/05 | 199,914 | 100,050 | 99,865 | 139,029 | 85,033 | 53,996 | 69.5 | 85.0 | 54.1 |
| 2005/06 | 202,754 | 101,445 | 101,308 | 148,082 | 90,634 | 57,448 | 73.0 | 89.3 | 56.7 |
| 2006/07 | 212,625 | 106,152 | 106,487 | 141,081 | 81,739 | 59,342 | 66.4 | 77.0 | 55.7 |
| 2007/08 | 223,048 | 111,874 | 111,874 | 144,031 | 83,766 | 60,265 | 64.6 | 74.9 | 53.9 |
| 2008/09 | 232,144 | 117,401 | 114,743 | 151,131 | 87,017 | 64,114 | 65.1 | 74.1 | 55.9 |
| 2009/10 | 245,960 | 125,476 | 120,495 | 151,702 | 84,772 | 66,930 | 61.7 | 67.6 | 55.5 |
| 2010/11 | 250,784 | 128,812 | 121,969 | 154,527 | 85,939 | 68,588 | 61.6 | 66.7 | 56.2 |

N.B In the academic year 2003/04 enrolment in middle school is seen to increase tremendously; this is due to the restructuring of grades. Middle level was restructured from grades 6-7 to 6-8.

Chart 9 Middle level: Enrolment by year and gender

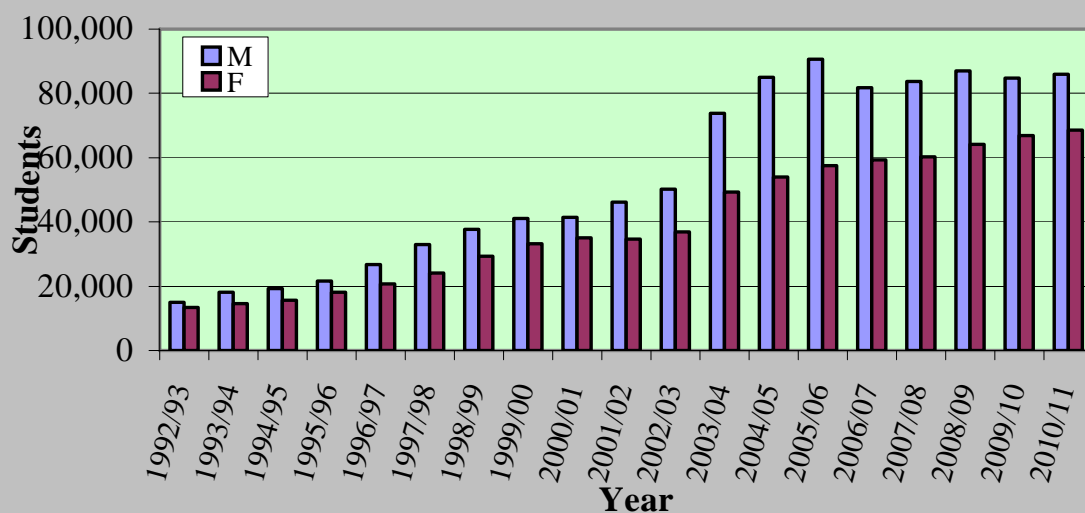


Table 23. Middle level: Deviation from the national GER by zoba, 2010/11

| Zoba | Population age 12-14 | | | Gross enrolment | | | GER | | | Deviation from national ratio | | |
|-------------------|----------------------|----------------|----------------|-----------------|---------------|---------------|-------------|-------------|-------------|-------------------------------|------------|------------|
| | T | M | F | T | M | F | T | M | F | T | M | F |
| Anseba | 35,807 | 18,701 | 17,121 | 21,150 | 11,945 | 9,205 | 59.1 | 63.9 | 53.8 | -2.5 | -2.7 | 5.3 |
| Debub | 66,469 | 33,990 | 32,471 | 57,955 | 31,635 | 26,320 | 87.2 | 93.1 | 81.1 | 25.6 | 26.5 | 32.6 |
| Deb-Keih-B | 5,989 | 3,038 | 2,949 | 2,041 | 1,479 | 562 | 34.1 | 48.7 | 19.1 | -27.5 | -17.9 | -29.4 |
| Gash Barka | 60,487 | 31,660 | 28,856 | 21,716 | 13,146 | 8,570 | 35.9 | 41.5 | 29.7 | -25.7 | -25.1 | -18.8 |
| Maekel | 51,180 | 25,638 | 25,508 | 40,753 | 20,841 | 19,912 | 79.6 | 81.3 | 78.1 | 18.0 | 14.7 | 29.6 |
| Sem-Keih-B | 30,853 | 16,074 | 14,790 | 10,912 | 6,893 | 4,019 | 35.4 | 42.9 | 27.2 | -26.2 | -23.7 | -21.3 |
| Total | 250,785 | 128,812 | 121,969 | 154,527 | 85,939 | 68,588 | 61.6 | 66.7 | 56.2 | 0.0 | 0.0 | 0.0 |

4. Net enrolment ratio

Table 24. Middle level: Net enrolment ratio by year, 1991/92-2010/11

| Year | Population 12-13 | | | Net enrolment | | | Net enrolment ratio | | |
|---------|------------------|---------|---------|---------------|--------|--------|---------------------|------|------|
| | T | M | F | T | M | F | T | M | F |
| 1991/92 | 93,113 | 46,436 | 46,678 | 9,727 | 5,111 | 4,616 | 10.4 | 11.0 | 9.9 |
| 1992/93 | 95,949 | 47,850 | 48,099 | 7,941 | 4,275 | 3,666 | 8.3 | 8.9 | 7.6 |
| 1993/94 | 98,871 | 49,307 | 49,564 | 8,594 | 4,604 | 3,990 | 8.7 | 9.3 | 8.1 |
| 1994/95 | 101,882 | 50,809 | 51,073 | 9,074 | 4,763 | 4,311 | 8.9 | 9.4 | 8.4 |
| 1995/96 | 104,985 | 52,356 | 52,629 | 9,988 | 5,299 | 4,689 | 9.5 | 10.1 | 8.9 |
| 1996/97 | 108,182 | 53,951 | 54,232 | 12,604 | 6,925 | 5,679 | 11.7 | 12.8 | 10.5 |
| 1997/98 | 111,477 | 55,594 | 55,883 | 14,751 | 8,062 | 6,689 | 13.2 | 14.5 | 12.0 |
| 1998/99 | 114,872 | 57,287 | 57,585 | 15,878 | 8,400 | 7,478 | 13.8 | 14.7 | 13.0 |
| 1999/00 | 118,370 | 59,031 | 59,339 | 18,201 | 9,552 | 8,649 | 15.4 | 16.2 | 14.6 |
| 2000/01 | 121,975 | 60,829 | 61,146 | 20,409 | 10,639 | 9,770 | 16.7 | 17.5 | 16.0 |
| 2001/02 | 125,690 | 62,682 | 63,008 | 22,348 | 11,718 | 10,630 | 17.8 | 18.7 | 16.9 |
| 2002/03 | 129,518 | 64,591 | 64,927 | 24,584 | 13,057 | 11,527 | 19.0 | 20.2 | 17.8 |
| | Population 12-14 | | | Enrolment | | | Net enrolment ratio | | |
| 2003/04 | 194,394 | 97,287 | 97,107 | 51,795 | 28,632 | 23,163 | 26.6 | 29.4 | 23.9 |
| 2004/05 | 199,914 | 100,050 | 99,865 | 60,323 | 33,879 | 26,444 | 30.2 | 33.9 | 26.5 |
| 2005/06 | 202,754 | 101,445 | 101,308 | 66,708 | 37,334 | 29,374 | 32.9 | 36.8 | 29.0 |
| 2006/07 | 212,625 | 106,152 | 106,487 | 72,729 | 40,276 | 32,453 | 34.2 | 37.9 | 30.5 |
| 2007/08 | 223,048 | 111,874 | 111,874 | 80,570 | 44,496 | 36,074 | 36.1 | 39.8 | 32.2 |
| 2008/09 | 232,144 | 117,401 | 114,743 | 86,569 | 47,349 | 39,220 | 37.3 | 40.3 | 34.2 |
| 2009/10 | 245,960 | 125,476 | 120,495 | 91,194 | 49,025 | 42,170 | 37.1 | 39.1 | 35.0 |
| 2010/11 | 250,784 | 128,812 | 121,969 | 94,245 | 50,614 | 43,631 | 37.6 | 39.3 | 35.8 |

Table 25. Middle level: Deviation from national NER by zoba, 2010/11

| Zoba | Population age 12-14 | | | Net enrolment | | | NER | | | Deviation from national ratio | | |
|--------------|----------------------|----------------|----------------|---------------|---------------|---------------|-------------|-------------|-------------|-------------------------------|------------|------------|
| | T | M | F | T | M | F | T | M | F | T | M | F |
| Anseba | 35,807 | 18,701 | 17,121 | 13,030 | 7,236 | 5,794 | 36.4 | 38.7 | 33.8 | -1.2 | -0.5 | -2.1 |
| Debub | 66,469 | 33,990 | 32,471 | 34,471 | 17,990 | 16,481 | 51.9 | 52.9 | 50.8 | 14.3 | 13.7 | 14.9 |
| Deb-Keih-B | 5,989 | 3,038 | 2,949 | 988 | 681 | 307 | 16.5 | 22.4 | 10.4 | -21.1 | -16.8 | -25.5 |
| Gash Barka | 60,487 | 31,660 | 28,856 | 13,011 | 7,620 | 5,391 | 21.5 | 24.1 | 18.7 | -16.1 | -15.1 | -17.2 |
| Maekel | 51,180 | 25,638 | 25,508 | 25,907 | 12,824 | 13,083 | 50.6 | 50.0 | 51.3 | 13.0 | 10.8 | 15.4 |
| Sem-Keih-B | 30,853 | 16,074 | 14,790 | 6,838 | 4,263 | 2,575 | 22.2 | 26.5 | 17.4 | -15.4 | -12.7 | -18.5 |
| Total | 250,785 | 128,812 | 121,969 | 94,245 | 50,614 | 43,631 | 37.6 | 39.3 | 35.8 | 0.0 | 0.0 | 0.0 |

5. Percentage of repeaters

Table 26. Middle level: Percentage of repeaters by year, 1991/92-2010/11

| Year | Enrolment | | | Repeaters | | | Percentage of Repeaters | | |
|---------|-----------|--------|--------|-----------|--------|--------|-------------------------|------|------|
| | T | M | F | T | M | F | T | M | F |
| 1991/92 | 27,917 | 14,414 | 13,503 | N.A | N.A | N.A | N.A | N.A | N.A |
| 1992/93 | 28,431 | 15,052 | 13,379 | 12,256 | 4,116 | 8,140 | 43.1 | 27.3 | 60.8 |
| 1993/94 | 32,781 | 18,129 | 14,652 | 5,544 | 2,120 | 3,424 | 16.9 | 11.7 | 23.4 |
| 1994/95 | 34,995 | 19,310 | 15,685 | 4,736 | 1,781 | 2,955 | 13.5 | 9.2 | 18.8 |
| 1995/96 | 39,751 | 21,648 | 18,103 | 5,329 | 1,918 | 3,411 | 13.4 | 8.9 | 18.8 |
| 1996/97 | 47,460 | 26,739 | 20,721 | 6,193 | 2,385 | 3,808 | 13.1 | 8.9 | 18.4 |
| 1997/98 | 57,152 | 32,998 | 24,154 | 8,707 | 3,401 | 5,306 | 15.2 | 10.3 | 22.0 |
| 1998/99 | 67,021 | 37,731 | 29,290 | 12,119 | 5,042 | 7,077 | 18.1 | 13.4 | 24.2 |
| 1999/00 | 74,317 | 41,033 | 33,284 | 15,632 | 7,053 | 8,579 | 21.0 | 17.2 | 25.8 |
| 2000/01 | 76,564 | 41,457 | 35,107 | 16,870 | 8,025 | 8,845 | 22.0 | 19.4 | 25.2 |
| 2001/02 | 80,882 | 46,215 | 34,667 | 17,419 | 9,029 | 8,390 | 21.5 | 19.5 | 24.2 |
| 2002/03 | 87,019 | 50,138 | 36,881 | 23,126 | 12,163 | 10,963 | 26.6 | 24.3 | 29.7 |
| 2003/04 | 122,966 | 73,742 | 49,224 | 21,352 | 12,648 | 8,704 | 17.4 | 17.2 | 17.7 |
| 2004/05 | 139,029 | 85,033 | 53,996 | 15,735 | 10,451 | 5,286 | 11.3 | 12.3 | 9.8 |
| 2005/06 | 148,082 | 90,634 | 57,448 | 25,283 | 16,719 | 8,564 | 17.1 | 18.5 | 14.9 |
| 2006/07 | 141,081 | 81,342 | 59,342 | 21,919 | 12,723 | 9,196 | 15.4 | 15.6 | 15.5 |
| 2007/08 | 144,031 | 83,766 | 60,265 | 20,151 | 11,852 | 8,299 | 14.0 | 14.1 | 13.8 |
| 2008/09 | 151,131 | 87,017 | 64,114 | 21,925 | 12,762 | 9,163 | 14.5 | 14.7 | 14.3 |
| 2009/10 | 151,702 | 84,772 | 66,930 | 18,922 | 10,872 | 8,050 | 12.5 | 12.8 | 12.0 |
| 2010/11 | 154,527 | 85,939 | 68,588 | 16,823 | 10,804 | 6,019 | 10.9 | 12.6 | 8.8 |

The above table indicates total number of repeaters repeating the same grade in current academic year.

The percentage of repeaters has been declining between 1992/93 and 1996/97 but has been increasing starting from 1997/98 up to 2002/03 with the exception of 2001/02. From 2003/04 up to 2010/11 a decreasing trend has been seen except for the academic years 2005/06 and 2008/09.

VII. Secondary level

1. Background

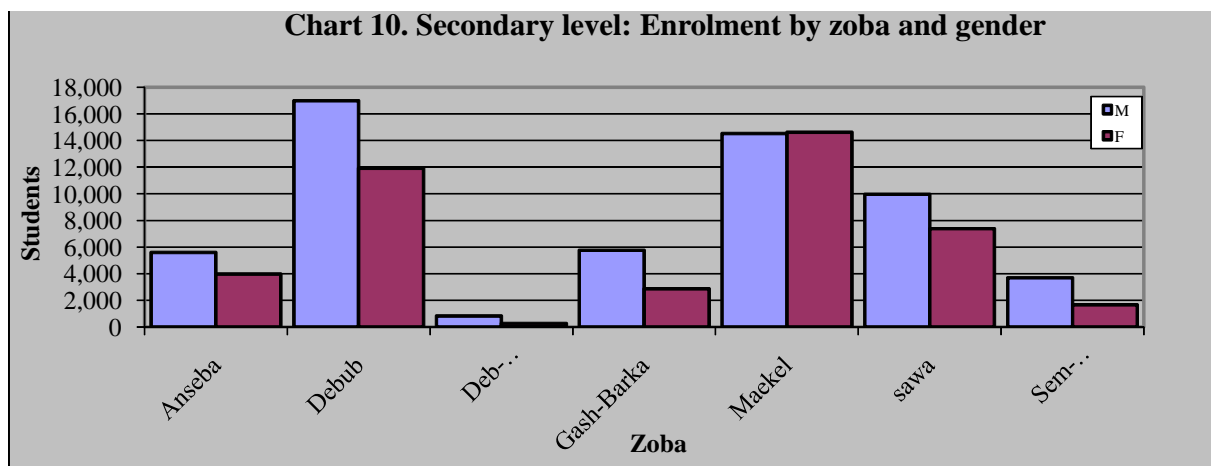
The duration of Secondary level is four years (Grades 9-12). The official school age is 15-18.

2. Enrolment

Enrolment for the academic year 2010/11 was 99,993. Female enrolment constitutes 42,684 (42.7%). Approximately 2.9% of the students in the Secondary level were attending non-government schools.

Table 27. Secondary level: Percentage of change by gender and zoba, 2010/11 (Only grade 12 is taught in Sawa)

| Zoba | 2009/10 | | | 2010/11 | | | Percentage of change | | |
|--------------|---------------|---------------|---------------|---------------|---------------|---------------|----------------------|------------|------------|
| | T | M | F | T | M | F | T | M | F |
| Anseba | 8,954 | 5,452 | 3,502 | 9,555 | 5,591 | 3,964 | 6.7 | 2.5 | 13.2 |
| Debub | 27,445 | 16,562 | 10,883 | 28,908 | 16,983 | 11,925 | 5.3 | 2.5 | 9.6 |
| Deb-Keih-B | 1,173 | 925 | 248 | 1,074 | 827 | 247 | -8.4 | -10.6 | -0.4 |
| Gash-Barka | 8,125 | 5,560 | 2,565 | 8,619 | 5,746 | 2,873 | 6.1 | 3.3 | 12.0 |
| Maekle | 29,401 | 14,746 | 14,655 | 29,141 | 14,517 | 14,624 | -0.9 | -1.6 | -0.2 |
| Sawa | 14,721 | 8,805 | 5,916 | 17,349 | 9,960 | 7,389 | 17.9 | 13.1 | 24.9 |
| Sem-Keih-B | 5,257 | 3,720 | 1,537 | 5,347 | 3,685 | 1,662 | 1.7 | -0.9 | 8.1 |
| Total | 95,076 | 55,770 | 39,306 | 99,993 | 57,309 | 42,684 | 5.2 | 2.8 | 8.6 |



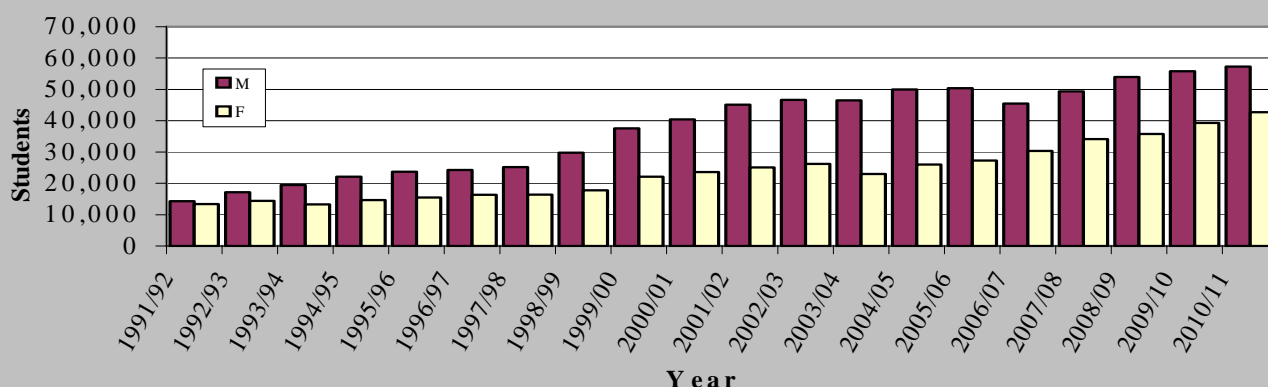
3. Gross enrolment ratio

Table 28. Secondary level: Gross enrolment ratio by year, 1991/92-2010/11

| Year | Population of age 14-17 | | | Enrolments | | | Gross enrolment ratio | | |
|---------|-------------------------|---------|---------|------------|--------|--------|-----------------------|------|------|
| | T | M | F | T | M | F | T | M | F |
| 1991/92 | 154,871 | 79,148 | 75,723 | 27,627 | 14,281 | 13,346 | 17.8 | 18.0 | 17.6 |
| 1992/93 | 159,587 | 81,558 | 78,029 | 31,531 | 17,141 | 14,390 | 19.8 | 21.0 | 18.4 |
| 1993/94 | 164,447 | 84,042 | 80,405 | 32,756 | 19,432 | 13,324 | 19.9 | 23.1 | 16.6 |
| 1994/95 | 169,456 | 86,601 | 82,854 | 36,728 | 22,097 | 14,631 | 21.7 | 25.5 | 17.7 |
| 1995/96 | 174,616 | 89,239 | 85,377 | 39,188 | 23,713 | 15,475 | 22.4 | 26.6 | 18.1 |
| 1996/97 | 179,934 | 91,957 | 87,978 | 40,594 | 24,262 | 16,332 | 22.6 | 26.4 | 18.6 |
| 1997/98 | 185,414 | 94,757 | 90,657 | 41,615 | 25,198 | 16,417 | 22.4 | 26.6 | 18.1 |
| 1998/99 | 191,061 | 97,643 | 93,418 | 47,533 | 29,777 | 17,756 | 24.9 | 30.5 | 19.0 |
| 1999/00 | 196,879 | 100,617 | 96,263 | 59,626 | 37,533 | 22,093 | 30.3 | 37.3 | 23.0 |
| 2000/01 | 202,875 | 103,681 | 99,194 | 63,951 | 40,355 | 23,596 | 31.5 | 38.9 | 23.8 |
| 2001/02 | 209,054 | 106,838 | 102,215 | 70,183 | 45,129 | 25,054 | 33.6 | 42.2 | 24.5 |
| 2002/03 | 215,420 | 110,092 | 105,328 | 72,818 | 46,633 | 26,185 | 33.8 | 42.4 | 24.9 |
| | Population of age 15-18 | | | Enrolment | | | Gross enrolment ratio | | |
| 2003/04 | 205,832 | 105,645 | 100,187 | 69,401 | 46,449 | 22,952 | 33.7 | 44.0 | 22.9 |
| 2004/05 | 211,677 | 108,645 | 103,032 | 76,051 | 50,010 | 26,041 | 35.9 | 46.0 | 25.3 |
| 2005/06 | 214,695 | 110,235 | 104,459 | 77,644 | 50,351 | 27,293 | 36.2 | 45.7 | 26.1 |
| 2006/07 | 229,791 | 117,429 | 112,376 | 75,800 | 45,471 | 30,329 | 33.0 | 38.7 | 27.0 |
| 2007/08 | 245,784 | 124,449 | 121,338 | 83,411 | 49,323 | 34,088 | 33.9 | 39.6 | 28.1 |
| 2008/09 | 260,652 | 130,861 | 129,793 | 89,761 | 53,997 | 35,764 | 34.4 | 41.3 | 27.6 |
| 2009/10 | 280,048 | 140,074 | 139,988 | 95,076 | 55,770 | 39,306 | 33.9 | 39.8 | 28.1 |
| 2010/11 | 289,699 | 145,039 | 144,660 | 99,993 | 57,309 | 42,684 | 34.5 | 39.5 | 29.5 |

Table 29. Secondary level: Deviation from national GER by zoba, 2010/11

| Zoba | Population age 15-18 | | | Gross enrolment | | | GER | | | Deviation from national ratio | | |
|---------------|----------------------|----------------|----------------|-----------------|---------------|---------------|-------------|-------------|-------------|-------------------------------|------------|------------|
| | T | M | F | T | M | F | T | M | F | T | M | F |
| Anseba | 41,363 | 21,057 | 20,306 | 9555 | 5591 | 3964 | 16.0 | 18.3 | 13.6 | -7.4 | -8.7 | -6.0 |
| Debub | 76,783 | 38,272 | 38,511 | 28908 | 16983 | 11925 | 27.3 | 31.3 | 23.0 | 3.9 | 4.3 | 3.4 |
| Deb-Keih-B | 6,918 | 3,421 | 3,497 | 1074 | 827 | 247 | 12.0 | 18.0 | 5.6 | -11.4 | -9.0 | -14.0 |
| Gash Barka | 69,873 | 35,648 | 34,224 | 8619 | 5746 | 2873 | 8.7 | 11.4 | 6.0 | -14.7 | -15.6 | -13.6 |
| Maekel | 59,121 | 28,868 | 30,253 | 29141 | 14517 | 14624 | 38.3 | 37.4 | 39.3 | 14.9 | 10.4 | 19.7 |
| Warsav Ykealo | 0 | 0 | 0 | 17349 | 9960 | 7389 | - | - | - | - | - | - |
| Sem-Keih-B | 35,641 | 18,099 | 17,541 | 5347 | 3685 | 1662 | 7.6 | 10.2 | 4.8 | -15.8 | -16.8 | -14.8 |
| Total | 289,699 | 145,039 | 144,660 | 99,993 | 57,309 | 42,684 | 34.5 | 39.5 | 29.5 | 0.0 | 0.0 | 0.0 |

Chart 11. Secondary level: Enrolment by year and gender

N.B Grade 12 is taught in Warsay Ykealo Secondary School

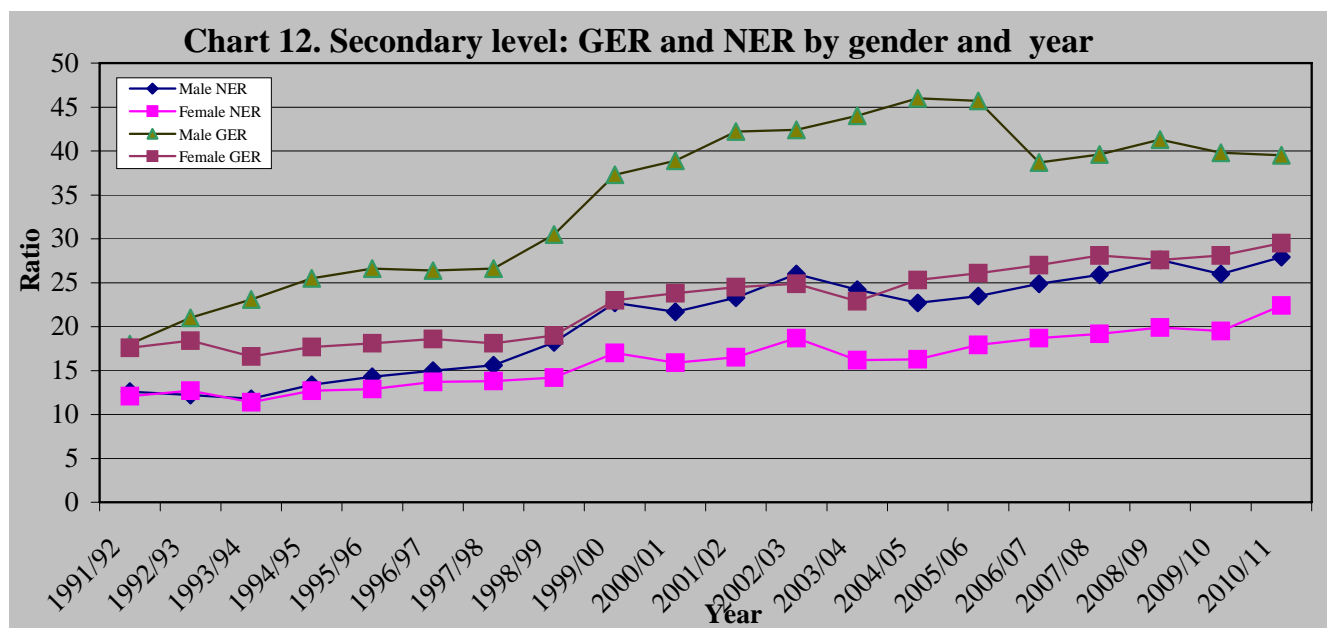
4. Net enrolment ratio

Table 30. Secondary level: Net enrolment ratio by year, 1991/92-2010/11

| Year | Population of age 14-17 | | | Net enrolment | | | Net enrolment ratio | | |
|---------|-------------------------|---------|---------|---------------|--------|--------|---------------------|------|------|
| | T | M | F | T | M | F | T | M | F |
| 1991/92 | 154,871 | 79,148 | 75,723 | 19,131 | 9,999 | 9,132 | 12.4 | 12.6 | 12.1 |
| 1992/93 | 159,587 | 81,558 | 78,029 | 19,880 | 9,951 | 9,929 | 12.5 | 12.2 | 12.7 |
| 1993/94 | 164,447 | 84,042 | 80,405 | 19,097 | 9,932 | 9,165 | 11.6 | 11.8 | 11.4 |
| 1994/95 | 169,456 | 86,601 | 82,854 | 22,108 | 11,584 | 10,524 | 13.0 | 13.4 | 12.7 |
| 1995/96 | 174,616 | 89,239 | 85,377 | 23,780 | 12,788 | 10,992 | 13.6 | 14.3 | 12.9 |
| 1996/97 | 179,934 | 91,957 | 87,978 | 25,911 | 13,822 | 12,089 | 14.4 | 15.0 | 13.7 |
| 1997/98 | 185,414 | 94,757 | 90,657 | 27,357 | 14,817 | 12,540 | 14.8 | 15.6 | 13.8 |
| 1998/99 | 191,061 | 97,643 | 93,418 | 30,995 | 17,755 | 13,240 | 16.2 | 18.2 | 14.2 |
| 1999/00 | 196,879 | 100,617 | 96,263 | 39,197 | 22,800 | 16,397 | 19.9 | 22.7 | 17.0 |
| 2000/01 | 202,875 | 103,681 | 99,194 | 38,271 | 22,482 | 15,789 | 18.9 | 21.7 | 15.9 |
| 2001/02 | 209,054 | 106,838 | 102,215 | 41,748 | 24,906 | 16,842 | 20.0 | 23.3 | 16.5 |
| 2002/03 | 215,420 | 110,092 | 105,328 | 48,269 | 28,612 | 19,657 | 22.4 | 26.0 | 18.7 |
| | Population 15-18 | | | Net enrolment | | | Net enrolment ratio | | |
| 2003/04 | 205,832 | 105,645 | 100,187 | 41,757 | 25,549 | 16,208 | 20.3 | 24.2 | 16.2 |
| 2004/05 | 211,677 | 108,645 | 103,032 | 41,523 | 24,702 | 16,821 | 19.6 | 22.7 | 16.3 |
| 2005/06 | 214,695 | 110,235 | 104,459 | 44,637 | 25,942 | 18,695 | 20.8 | 23.5 | 17.9 |
| 2006/07 | 229,791 | 117,429 | 112,376 | 50,266 | 29,245 | 21,021 | 21.9 | 24.9 | 18.7 |
| 2007/08 | 245,784 | 124,449 | 121,338 | 56,261 | 32,261 | 23,310 | 22.9 | 25.9 | 19.2 |
| 2008/09 | 260,652 | 130,861 | 129,793 | 61,952 | 36,078 | 25,874 | 23.8 | 27.6 | 19.9 |
| 2009/10 | 280,048 | 140,074 | 139,988 | 63,772 | 36,413 | 27,359 | 22.8 | 26.0 | 19.5 |
| 2010/11 | 289,699 | 145,039 | 144,660 | 72,965 | 40,538 | 32,427 | 25.2 | 27.9 | 22.4 |

Table 31. Secondary Level: Deviation from national NER by zoba, 2010/11

| Zoba | Population age 15-18 | | | Net enrolment | | | NER | | | Deviation from national ratio | | |
|---------------|----------------------|----------------|----------------|---------------|---------------|---------------|-------------|-------------|-------------|-------------------------------|------------|------------|
| | T | M | F | T | M | F | T | M | F | T | M | F |
| Anseba | 41,363 | 21,057 | 20,306 | 7233 | 4157 | 3076 | 17.5 | 19.7 | 15.1 | 0.1 | -8.2 | -7.4 |
| Debub | 76,783 | 38,272 | 38,511 | 22073 | 12605 | 9468 | 28.7 | 32.9 | 24.6 | 11.3 | 5.0 | 2.1 |
| Deb-Keih-B | 6,918 | 3,421 | 3,497 | 684 | 520 | 164 | 9.9 | 15.2 | 4.7 | -7.5 | -12.7 | -17.8 |
| Gash Barka | 69,873 | 35,648 | 34,224 | 6604 | 4308 | 2296 | 9.5 | 12.1 | 6.7 | -7.9 | -15.8 | -15.8 |
| Maekel | 59,121 | 28,868 | 30,253 | 23322 | 11399 | 11923 | 39.4 | 39.5 | 39.4 | 22.0 | 11.6 | 16.9 |
| Warsay Ykealo | 0 | 0 | 0 | 9025 | 4798 | 4227 | - | - | - | - | - | - |
| Sem-Keih-B | 35,641 | 18,099 | 17,541 | 4024 | 2751 | 1273 | 11.3 | 15.2 | 7.3 | -6.1 | -12.7 | -15.2 |
| Total | 289,699 | 145,039 | 144,660 | 72965 | 40,538 | 32,427 | 25.2 | 27.9 | 22.5 | 0.0 | 0.0 | 0.0 |



5. Percentage of repeaters

Table 32. Secondary level: Percentage of repeaters by year, 1991/92-2010/11

| Year | Enrolment | | | Repeaters | | | Percentage | | |
|---------|-----------|--------|--------|-----------|-------|-------|------------|------|------|
| | T | M | F | T | M | F | T | M | F |
| 1991/92 | 27,627 | 14,281 | 13,346 | 11,072 | 4,241 | 6,831 | 40.1 | 29.7 | 51.2 |
| 1992/93 | 31,531 | 17,141 | 14,390 | 11,426 | 4,341 | 7,085 | 36.2 | 25.3 | 49.2 |
| 1993/94 | 32,756 | 19,432 | 13,324 | 7,504 | 3,212 | 4,292 | 22.9 | 16.5 | 32.2 |
| 1994/95 | 36,728 | 22,097 | 14,631 | 6,182 | 2,704 | 3,478 | 16.8 | 12.2 | 23.8 |
| 1995/96 | 39,188 | 23,713 | 15,475 | 7,296 | 3,113 | 4,183 | 18.6 | 13.1 | 27.0 |
| 1996/97 | 40,594 | 24,262 | 16,332 | 7,135 | 3,272 | 3,863 | 17.6 | 13.5 | 23.7 |
| 1997/98 | 41,615 | 25,198 | 16,417 | 7,648 | 3,305 | 4,343 | 18.4 | 13.1 | 26.4 |
| 1998/99 | 47,533 | 29,777 | 17,756 | 5,941 | 2,813 | 3,128 | 12.4 | 9.4 | 17.6 |
| 1999/00 | 57,334 | 36,504 | 20,830 | 7,640 | 3,999 | 3,641 | 13.3 | 11.0 | 17.5 |
| 2000/01 | 63,951 | 40,355 | 23,596 | 11,627 | 6,747 | 4,880 | 18.2 | 16.7 | 20.7 |
| 2001/02 | 70,183 | 45,129 | 25,054 | 13,321 | 7,902 | 5,419 | 19.0 | 17.5 | 21.6 |
| 2002/03 | 72,818 | 46,633 | 26,185 | 13,922 | 8,363 | 5,559 | 19.1 | 17.9 | 21.2 |
| 2003/04 | 69,401 | 46,449 | 22,952 | 11,437 | 7,418 | 4,019 | 16.8 | 16.0 | 17.5 |
| 2004/05 | 76,051 | 50,010 | 26,041 | 4,066 | 3,258 | 808 | 5.3 | 6.5 | 3.1 |
| 2005/06 | 77,644 | 50,351 | 27,293 | 3,066 | 2,765 | 301 | 4.0 | 5.5 | 1.1 |
| 2006/07 | 75,800 | 45,471 | 30,329 | 6,190 | 4,465 | 1,725 | 8.2 | 9.8 | 5.7 |
| 2007/08 | 83,411 | 49,323 | 34,088 | 4,998 | 3,318 | 1,680 | 6.0 | 6.7 | 4.9 |
| 2008/09 | 89,761 | 53,997 | 35,764 | 6,213 | 4,426 | 1,787 | 6.9 | 8.2 | 5.0 |
| 2009/10 | 95,076 | 55,770 | 39,306 | 3,938 | 1,147 | 2,791 | 4.1 | 2.1 | 7.1 |
| 2010/11 | 99,993 | 57,309 | 42,684 | 8,804 | 5,887 | 2,917 | 8.8 | 10.3 | 6.8 |

N.B. The above table indicates total number of repeaters repeating the same grade in current academic year.

VIII. Internal efficiency

1. Length of school year.

The duration of the school year in the academic year 2010/11 was 180 days in the highlands and 181 days in the lowlands. The number of periods per week in grades 1, 2, and 3 were 26, 27, and 28 respectively and in grades 4 and 5 were 30.

In the academic year 2010/11, schooling in the highlands began on August 27 and ended on June 30. In the lowlands it began on September 3 and ended on June 16. Schools in the lowlands, teach 6 days a week while schools in the highlands, teach 5 days a week.

The duration of the school year in the academic year 2010/11 is shown in table 32

Table 33. Elementary level: Duration of school year, 2010/11

| Grade | Periods per week | Length of a period (minute) | Total number of periods per year | Contact hrs. |
|-------|------------------|-----------------------------|----------------------------------|--------------|
| 1 | 29 | 40 | 832 | 555 |
| 2 | 27 | 40 | 864 | 576 |
| 3 | 28 | 40 | 898 | 599 |
| 4 | 30 | 40 | 960 | 640 |
| 5 | 30 | 40 | 960 | 640 |

Duration of school year in both locations is the same.

2.All grades: Flow rates

Table 34. All grades: Flow rates by gender and grade, 2010/11

| Grade | Dropout | | | Promotion | | | Repetition | | |
|-------------|------------|------------|------------|-------------|-------------|-------------|-------------|-------------|-------------|
| | M | F | T | M | F | T | M | F | T |
| 1 | 8.2 | 6.8 | 7.6 | 79.3 | 81.7 | 80.3 | 12.5 | 11.5 | 12.1 |
| 2 | 4.3 | 3.3 | 3.9 | 80.6 | 83.6 | 82.0 | 15.1 | 13.1 | 14.2 |
| 3 | 4.0 | 3.3 | 3.6 | 84.4 | 87.4 | 85.8 | 11.6 | 9.3 | 10.6 |
| 4 | 4.4 | 3.5 | 4.0 | 83.0 | 86.7 | 84.6 | 12.6 | 9.8 | 11.3 |
| 5 | 4.5 | 3.1 | 3.9 | 87.9 | 91.2 | 89.3 | 7.6 | 5.8 | 6.8 |
| 1-5 | 5.4 | 4.3 | 4.9 | 82.5 | 85.5 | 83.8 | 12.1 | 10.3 | 11.3 |
| 6 | 6.98 | 4.40 | 5.87 | 77.18 | 83.71 | 79.99 | 15.84 | 11.90 | 14.14 |
| 7 | 6.31 | 3.90 | 5.24 | 83.73 | 88.74 | 85.97 | 9.96 | 7.36 | 8.80 |
| 8 | 5.64 | 4.82 | 5.27 | 83.02 | 88.35 | 85.45 | 11.35 | 6.83 | 9.29 |
| 6-8 | 6.3 | 4.4 | 5.5 | 81.1 | 86.9 | 83.7 | 12.6 | 8.8 | 10.9 |
| 9 | 9.17 | 6.58 | 8.09 | 74.74 | 84.13 | 78.67 | 16.09 | 9.29 | 13.24 |
| 10 | 7.79 | 6.71 | 7.32 | 77.42 | 81.70 | 79.27 | 14.80 | 11.60 | 13.42 |
| 11 | 6.44 | 10.11 | 8.04 | 91.48 | 88.08 | 90.00 | 2.08 | 1.81 | 1.96 |
| 9-11 | 8.1 | 7.5 | 7.8 | 79.5 | 84.3 | 81.5 | 12.4 | 8.2 | 10.6 |

3. Elementary level: Flow rates

Table 35. Elementary level: Flow rates by age and gender, 2010/11

| Age | Dropout | | | Promotion | | | Repetition | | |
|--------------|------------|------------|------------|-------------|-------------|-------------|-------------|-------------|-------------|
| | M | F | T | M | F | T | M | F | T |
| 5 | 16.0 | 11.3 | 13.8 | 57.2 | 60.0 | 58.5 | 26.7 | 28.8 | 27.7 |
| 6 | 7.7 | 5.9 | 6.9 | 77.4 | 81.9 | 79.5 | 14.9 | 12.3 | 13.7 |
| 7 | 6.2 | 5.2 | 5.7 | 79.9 | 82.9 | 81.3 | 13.8 | 12.0 | 13.0 |
| 8 | 4.9 | 3.9 | 4.4 | 82.2 | 85.4 | 83.7 | 12.9 | 10.8 | 11.9 |
| 9 | 4.1 | 3.4 | 3.8 | 84.1 | 87.1 | 85.5 | 11.8 | 9.5 | 10.7 |
| 10 | 4.2 | 3.3 | 3.8 | 84.6 | 87.6 | 86.0 | 11.2 | 9.1 | 10.2 |
| 11 | 4.1 | 3.4 | 3.8 | 85.7 | 88.2 | 86.8 | 10.2 | 8.5 | 9.4 |
| 12 | 5.7 | 4.5 | 5.2 | 83.7 | 87.2 | 85.2 | 10.6 | 8.3 | 9.7 |
| 13 | 8.1 | 6.7 | 7.6 | 82.3 | 83.2 | 82.6 | 9.6 | 10.1 | 9.8 |
| 14 | 10.4 | 0.0 | 10.4 | 87.5 | 0.0 | 87.5 | 2.1 | 0.0 | 2.1 |
| 15 | 12.5 | 0.0 | 10.0 | 87.5 | 50.0 | 80.0 | 0.0 | 50.0 | 10.0 |
| 16 | 0.0 | 0.0 | 0.0 | 0.0 | 100.0 | 100.0 | 0.0 | 0.0 | 0.0 |
| 17 | 16.0 | 11.3 | 13.8 | 57.2 | 60.0 | 58.5 | 26.7 | 28.8 | 27.7 |
| Total | 5.4 | 4.3 | 4.9 | 82.5 | 85.4 | 83.8 | 12.1 | 10.3 | 11.3 |

4. Middle level: Flow rates

Table 36. Middle level: Flow rates by age and gender, 2010/11

| Age | Dropout | | | Promotion | | | Repetition | | |
|--------------|------------|------------|------------|-------------|-------------|-------------|-------------|------------|-------------|
| | M | F | T | M | F | T | M | F | T |
| 10 | 7.0 | 3.4 | 5.1 | 82.9 | 88.5 | 85.7 | 10.1 | 8.1 | 9.1 |
| 11 | 3.4 | 2.3 | 2.9 | 85.4 | 90.2 | 87.8 | 11.1 | 7.5 | 9.3 |
| 12 | 3.7 | 2.9 | 3.3 | 84.4 | 89.9 | 87.0 | 11.9 | 7.3 | 9.7 |
| 13 | 4.4 | 3.0 | 3.7 | 83.8 | 88.6 | 86.0 | 11.8 | 8.4 | 10.2 |
| 14 | 5.5 | 4.1 | 4.9 | 82.7 | 87.6 | 84.9 | 11.7 | 8.3 | 10.2 |
| 15 | 7.9 | 5.7 | 7.0 | 79.6 | 85.4 | 82.1 | 12.5 | 8.9 | 11.0 |
| 16 | 10.1 | 7.7 | 9.2 | 75.7 | 81.5 | 78.0 | 14.1 | 10.8 | 12.8 |
| 17 | 12.9 | 10.9 | 12.2 | 69.1 | 73.8 | 70.7 | 18.0 | 15.4 | 17.1 |
| 18 | 0.0 | 0.0 | 0.0 | 100.0 | 0.0 | 100.0 | 0.0 | 0.0 | 0.0 |
| Total | 6.3 | 4.4 | 5.5 | 81.1 | 86.9 | 83.7 | 12.6 | 8.8 | 10.9 |

5. Secondary level: Flow rates

Table 37. Secondary level: Flow rates by age and gender, 2010/11

| Age | Grade 9-11 | | | | | | | | |
|--------------|------------|------------|------------|-------------|-------------|-------------|-------------|------------|-------------|
| | Dropout | | | Promotion | | | Repetition | | |
| | M | F | T | M | F | T | M | F | T |
| 12 | 0.0 | 12.5 | 5.9 | 100.0 | 87.5 | 94.1 | 0.0 | 0.0 | 0.0 |
| 13 | 3.9 | 4.7 | 4.4 | 94.0 | 94.7 | 94.4 | 2.1 | 0.6 | 1.3 |
| 14 | 3.6 | 2.4 | 3.0 | 90.3 | 94.2 | 92.2 | 6.1 | 3.4 | 4.8 |
| 15 | 5.5 | 3.6 | 4.6 | 85.1 | 90.3 | 87.6 | 9.4 | 6.1 | 7.8 |
| 16 | 7.1 | 6.2 | 6.7 | 79.7 | 85.1 | 82.2 | 13.1 | 8.7 | 11.1 |
| 17 | 8.3 | 7.1 | 7.8 | 78.2 | 83.9 | 80.6 | 13.5 | 9.0 | 11.6 |
| 18 | 9.9 | 12.0 | 10.7 | 73.7 | 77.2 | 75.0 | 16.4 | 10.8 | 14.2 |
| 19 | 10.9 | 14.0 | 12.0 | 78.0 | 76.9 | 77.7 | 11.0 | 9.1 | 10.4 |
| 20 | 0.0 | 12.5 | 4.7 | 85.2 | 62.5 | 76.7 | 14.8 | 25.0 | 18.6 |
| Total | 8.1 | 7.5 | 7.8 | 79.5 | 84.3 | 81.5 | 12.4 | 8.2 | 10.6 |

6. Elementary level: Zoba flow rates

Table 38. Elementary level: Average flow rates, 2010/11

| | | Grade 1-5 | | | Grade 1 | | | Grade 2 | | | Grade 3 | | | Grade 4 | | | Grade 5 | | |
|------------|-------|-----------|------|------|---------|------|------|---------|------|------|---------|------|------|---------|------|------|---------|------|------|
| | | M | F | T | M | F | T | M | F | T | M | F | T | M | F | T | M | F | T |
| Eritrea | Drout | 5.4 | 4.3 | 4.9 | 8.2 | 6.8 | 7.6 | 4.3 | 3.3 | 3.9 | 4.0 | 3.3 | 3.6 | 4.4 | 3.5 | 4.0 | 4.5 | 3.1 | 3.9 |
| | Prom | 82.5 | 85.5 | 83.8 | 79.3 | 81.7 | 80.3 | 80.6 | 83.6 | 82.0 | 84.4 | 87.4 | 85.8 | 83.0 | 86.7 | 84.6 | 87.9 | 91.2 | 89.3 |
| | Repet | 12.1 | 10.3 | 11.3 | 12.5 | 11.5 | 12.1 | 15.1 | 13.1 | 14.2 | 11.6 | 9.3 | 10.6 | 12.6 | 9.8 | 11.3 | 7.6 | 5.8 | 6.8 |
| Anseba | Drout | 4.2 | 3.0 | 3.7 | 5.9 | 5.2 | 5.6 | 2.9 | 2.1 | 2.6 | 4.1 | 2.2 | 3.3 | 3.8 | 2.6 | 3.3 | 3.4 | 1.9 | 2.8 |
| | Prom | 80.1 | 84.5 | 82.1 | 79.4 | 82.0 | 80.6 | 76.3 | 81.7 | 78.7 | 80.9 | 87.2 | 83.7 | 80.0 | 84.1 | 81.8 | 85.9 | 90.2 | 87.7 |
| | Repet | 15.7 | 12.5 | 14.2 | 14.7 | 12.8 | 13.8 | 20.7 | 16.2 | 18.7 | 15.0 | 10.6 | 13.0 | 16.2 | 13.3 | 14.9 | 10.7 | 7.9 | 9.5 |
| Debub | Drout | 5.3 | 4.0 | 4.7 | 7.5 | 6.1 | 6.8 | 4.5 | 3.3 | 3.9 | 4.1 | 3.2 | 3.7 | 4.7 | 3.4 | 4.1 | 5.0 | 3.2 | 4.2 |
| | Prom | 85.0 | 88.6 | 86.6 | 82.0 | 85.5 | 83.6 | 83.4 | 87.6 | 85.2 | 86.5 | 89.1 | 87.6 | 85.7 | 90.3 | 87.7 | 89.0 | 92.5 | 90.6 |
| | Repet | 9.7 | 7.4 | 8.7 | 10.5 | 8.5 | 9.6 | 12.2 | 9.1 | 10.8 | 9.4 | 7.7 | 8.7 | 9.6 | 6.3 | 8.2 | 6.0 | 4.3 | 5.2 |
| DKB | Drout | 8.1 | 5.4 | 7.2 | 13.4 | 8.6 | 11.7 | 6.5 | 4.6 | 5.8 | 5.4 | 3.5 | 4.8 | 5.8 | 2.5 | 4.9 | 4.1 | 2.9 | 3.7 |
| | Prom | 76.3 | 77.3 | 76.7 | 72.0 | 69.9 | 71.3 | 73.9 | 73.5 | 73.7 | 79.2 | 84.9 | 80.9 | 78.2 | 83.8 | 79.9 | 85.3 | 91.9 | 87.3 |
| | Repet | 15.6 | 17.3 | 16.1 | 14.6 | 21.5 | 17.0 | 19.6 | 21.9 | 20.5 | 15.4 | 11.6 | 14.3 | 15.9 | 13.7 | 15.3 | 10.6 | 5.2 | 9.0 |
| Gash-Barka | Drout | 9.4 | 8.3 | 8.9 | 13.5 | 11.6 | 12.6 | 7.6 | 6.4 | 7.1 | 6.8 | 6.7 | 6.7 | 7.4 | 7.2 | 7.3 | 7.9 | 5.9 | 7.1 |
| | Prom | 75.3 | 76.0 | 75.6 | 71.6 | 73.5 | 72.5 | 74.1 | 74.2 | 74.1 | 78.4 | 77.5 | 78.0 | 75.2 | 75.7 | 75.4 | 82.1 | 84.6 | 83.2 |
| | Repet | 15.3 | 15.7 | 15.5 | 14.9 | 14.9 | 14.9 | 18.2 | 19.4 | 18.8 | 14.8 | 15.8 | 15.3 | 17.3 | 17.2 | 17.3 | 10.0 | 9.4 | 9.7 |
| Maekel | Drout | 1.9 | 1.5 | 1.7 | 2.5 | 2.4 | 2.4 | 1.5 | 1.2 | 1.4 | 1.6 | 1.3 | 1.4 | 1.8 | 1.2 | 1.5 | 2.0 | 1.5 | 1.8 |
| | Prom | 89.1 | 92.7 | 90.8 | 87.9 | 89.7 | 88.8 | 87.7 | 91.4 | 89.5 | 89.2 | 94.1 | 91.5 | 88.8 | 93.8 | 91.2 | 92.6 | 95.2 | 93.8 |
| | Repet | 9.0 | 5.8 | 7.5 | 9.6 | 7.9 | 8.8 | 10.7 | 7.3 | 9.1 | 9.2 | 4.7 | 7.1 | 9.4 | 5.0 | 7.4 | 5.4 | 3.4 | 4.4 |
| SKB | Drout | 4.8 | 4.4 | 4.7 | 8.5 | 7.0 | 7.8 | 3.9 | 3.1 | 3.5 | 2.3 | 3.0 | 2.6 | 3.9 | 4.3 | 4.0 | 3.4 | 3.3 | 3.3 |
| | Prom | 81.5 | 81.0 | 81.2 | 77.5 | 77.0 | 77.4 | 78.4 | 77.6 | 78.0 | 85.7 | 86.1 | 85.9 | 82.0 | 82.1 | 82.0 | 88.0 | 87.8 | 87.9 |
| | Repet | 13.7 | 14.6 | 14.1 | 14.0 | 16.0 | 14.8 | 17.8 | 19.3 | 18.5 | 12.1 | 10.9 | 11.6 | 14.2 | 13.6 | 13.9 | 8.7 | 8.9 | 8.8 |

7. Middle level: Zoba flow rates

Table 39. Middle level: Average flow rates, 2010/11

| | | Grade 6-8 | | | Grade 6 | | | Grade 7 | | | Grade 8 | | |
|-------------------|--------------|-----------|------|------|---------|------|------|---------|------|------|---------|------|------|
| | | M | F | T | M | F | T | M | F | T | M | F | T |
| Eritrea | Drou | 6.3 | 4.4 | 5.5 | 7.0 | 4.4 | 5.9 | 6.3 | 3.9 | 5.2 | 5.6 | 4.8 | 5.3 |
| | Prom | 81.1 | 86.9 | 83.7 | 77.2 | 83.7 | 80.0 | 83.7 | 88.7 | 86.0 | 83.0 | 88.3 | 85.4 |
| | Repet | 12.6 | 8.8 | 10.9 | 15.8 | 11.9 | 14.1 | 10.0 | 7.4 | 8.8 | 11.3 | 6.8 | 9.3 |
| Anseba | Drou | 6.2 | 3.4 | 5.0 | 7.0 | 3.8 | 5.6 | 7.0 | 2.9 | 5.2 | 4.4 | 3.6 | 4.0 |
| | Prom | 78.9 | 84.7 | 81.4 | 73.7 | 80.4 | 76.5 | 81.9 | 88.5 | 84.8 | 83.1 | 86.3 | 84.5 |
| | Repet | 14.9 | 11.9 | 13.6 | 19.3 | 15.8 | 17.8 | 11.1 | 8.7 | 10.0 | 12.5 | 10.1 | 11.5 |
| Debub | Drou | 7.1 | 5.7 | 6.4 | 7.3 | 5.1 | 6.3 | 6.8 | 4.9 | 5.9 | 7.2 | 7.0 | 7.1 |
| | Prom | 83.8 | 88.0 | 85.7 | 81.8 | 86.9 | 84.1 | 84.8 | 89.2 | 86.8 | 84.9 | 88.0 | 86.3 |
| | Repet | 9.1 | 6.3 | 7.8 | 10.9 | 8.0 | 9.6 | 8.4 | 5.9 | 7.3 | 7.9 | 5.1 | 6.6 |
| DKB | Drou | 8.2 | 3.7 | 7.0 | 9.6 | 3.8 | 8.2 | 7.2 | 4.0 | 6.4 | 7.5 | 3.5 | 6.3 |
| | Prom | 77.2 | 85.4 | 79.5 | 72.5 | 82.3 | 74.9 | 84.4 | 87.2 | 85.1 | 76.7 | 86.8 | 80.0 |
| | Repet | 14.5 | 10.9 | 13.5 | 17.9 | 14.0 | 17.0 | 8.4 | 8.7 | 8.5 | 15.7 | 9.7 | 13.8 |
| Gash-Barka | Drou | 9.3 | 7.6 | 8.6 | 11.5 | 8.4 | 10.3 | 8.5 | 7.3 | 8.0 | 7.0 | 6.8 | 6.9 |
| | Prom | 70.5 | 75.6 | 72.5 | 64.6 | 69.9 | 66.7 | 76.3 | 78.8 | 77.3 | 72.7 | 80.3 | 75.6 |
| | Repet | 20.2 | 16.8 | 18.9 | 23.9 | 21.7 | 23.0 | 15.2 | 13.9 | 14.7 | 20.3 | 12.8 | 17.4 |
| Maekel | Drou | 3.6 | 1.9 | 2.8 | 3.2 | 1.7 | 2.5 | 4.3 | 1.9 | 3.1 | 3.3 | 2.2 | 2.7 |
| | Prom | 85.5 | 92.0 | 88.7 | 82.4 | 90.0 | 85.9 | 86.8 | 92.5 | 89.6 | 87.2 | 93.3 | 90.3 |
| | Repet | 10.9 | 6.1 | 8.6 | 14.4 | 8.4 | 11.6 | 8.9 | 5.6 | 7.3 | 9.5 | 4.5 | 7.0 |
| SKB | Drou | 5.5 | 3.5 | 4.7 | 5.8 | 3.9 | 5.0 | 5.4 | 3.0 | 4.5 | 5.1 | 3.5 | 4.5 |
| | Prom | 80.3 | 82.9 | 81.3 | 76.9 | 80.1 | 78.1 | 85.1 | 87.4 | 85.9 | 79.4 | 81.9 | 80.3 |
| | Repet | 14.2 | 13.6 | 14.0 | 17.3 | 16.0 | 16.8 | 9.4 | 9.7 | 9.5 | 15.4 | 14.6 | 15.1 |

8. Secondary level: Zoba flow rates

Table 40. Secondary level: Average flow rates, 2010/11

| | | Grade 9-12 | | | Grade 9 | | | Grade 10 | | | Grade 11 | | |
|-------------------|--------------|------------|------|------|---------|------|------|----------|------|------|----------|------|------|
| | | M | F | T | M | F | T | M | F | T | M | F | T |
| Eritrea | Drou | 8.1 | 7.5 | 7.8 | 9.2 | 6.6 | 8.1 | 7.8 | 6.7 | 7.3 | 6.4 | 10.1 | 8.0 |
| | Prom | 79.5 | 84.3 | 81.5 | 74.7 | 84.1 | 78.7 | 77.4 | 81.7 | 79.3 | 91.5 | 88.1 | 90.0 |
| | Repet | 12.4 | 8.2 | 10.6 | 16.1 | 9.3 | 13.2 | 14.8 | 11.6 | 13.4 | 2.1 | 1.8 | 2.0 |
| Anseba | Drou | 8.5 | 7.9 | 8.2 | 9.7 | 6.0 | 8.1 | 8.1 | 8.4 | 8.3 | 6.3 | 11.5 | 8.4 |
| | Prom | 75.9 | 82.5 | 78.6 | 68.9 | 81.1 | 74.0 | 75.8 | 81.1 | 78.0 | 91.6 | 87.8 | 90.1 |
| | Repet | 15.6 | 9.6 | 13.1 | 21.3 | 12.9 | 17.8 | 16.1 | 10.5 | 13.7 | 2.1 | 0.7 | 1.5 |
| Debub | Drou | 9.0 | 9.9 | 9.3 | 9.9 | 8.4 | 9.3 | 9.4 | 8.9 | 9.2 | 6.5 | 13.9 | 9.6 |
| | Prom | 79.7 | 83.1 | 81.1 | 77.3 | 85.4 | 80.6 | 73.9 | 78.7 | 75.9 | 92.2 | 84.4 | 88.9 |
| | Repet | 11.3 | 7.1 | 9.6 | 12.8 | 6.2 | 10.1 | 16.6 | 12.4 | 14.9 | 1.3 | 1.8 | 1.5 |
| DKB | Drou | 8.3 | 7.7 | 8.2 | 7.8 | 7.3 | 7.7 | 9.2 | 9.0 | 9.2 | 7.8 | 5.9 | 7.4 |
| | Prom | 75.0 | 78.1 | 75.7 | 69.5 | 76.0 | 70.9 | 71.3 | 74.0 | 72.0 | 91.6 | 90.2 | 91.3 |
| | Repet | 16.7 | 14.2 | 16.1 | 22.8 | 16.7 | 21.4 | 19.4 | 17.0 | 18.8 | 0.6 | 3.9 | 1.3 |
| Gash-Barka | Drou | 10.2 | 9.2 | 9.9 | 11.3 | 8.0 | 10.1 | 9.4 | 7.4 | 8.7 | 9.3 | 13.7 | 10.8 |
| | Prom | 76.9 | 82.8 | 78.9 | 71.8 | 83.6 | 75.9 | 76.4 | 82.0 | 78.1 | 87.2 | 82.2 | 85.6 |
| | Repet | 12.9 | 8.0 | 11.3 | 16.9 | 8.4 | 14.0 | 14.3 | 10.6 | 13.1 | 3.4 | 4.1 | 3.7 |
| Maekel | Drou | 6.1 | 5.1 | 5.6 | 7.6 | 4.9 | 6.3 | 5.2 | 4.5 | 4.8 | 4.7 | 6.2 | 5.5 |
| | Prom | 81.3 | 86.1 | 83.7 | 74.4 | 84.1 | 79.1 | 81.8 | 84.0 | 83.0 | 92.7 | 92.2 | 92.5 |
| | Repet | 12.6 | 8.7 | 10.7 | 18.0 | 10.9 | 14.6 | 13.0 | 11.4 | 12.2 | 2.6 | 1.6 | 2.1 |
| SKB | Drou | 8.0 | 7.1 | 7.7 | 7.8 | 5.4 | 7.1 | 7.8 | 6.7 | 7.4 | 8.8 | 11.0 | 9.5 |
| | Prom | 81.8 | 84.4 | 82.6 | 78.9 | 85.0 | 80.8 | 80.4 | 82.4 | 81.0 | 89.6 | 86.5 | 88.6 |
| | Repet | 10.2 | 8.6 | 9.7 | 13.2 | 9.6 | 12.1 | 11.8 | 11.0 | 11.6 | 1.6 | 2.5 | 1.9 |

9. Elementary level: Cohort Reconstruction

Figure 1-7 are constructed based on the actual flow rates of the 2010/11 academic year indicated in table 38.

Figure 1: Elementary level: hypothetical cohort reconstruction (Constant) ERITREA

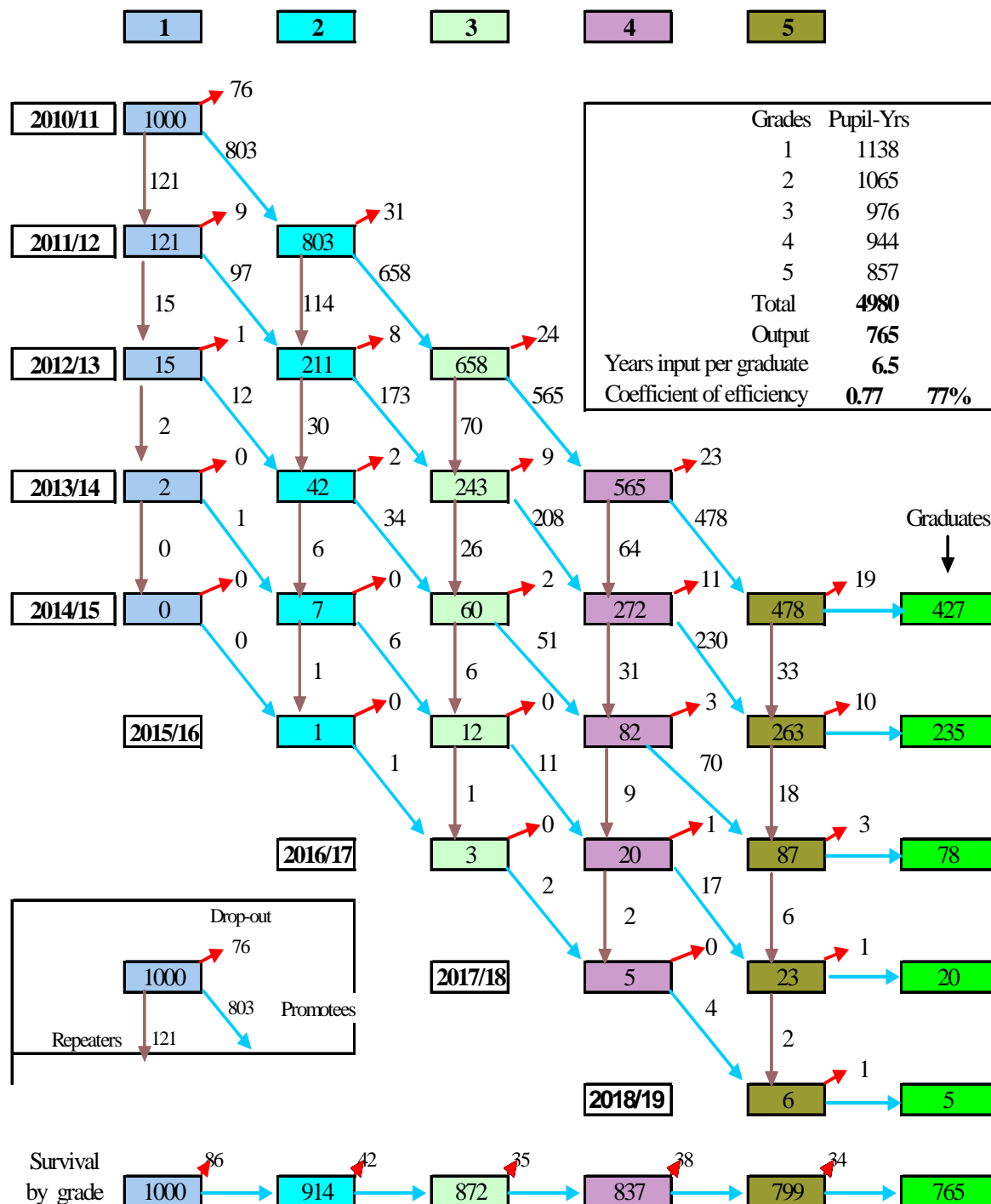


Table 41. Eritrea elementary level: Wastage, survival and transition rates by zoba

(Based on the 2009/10 flow rate and cohort reconstruction of each zoba)

| Internal efficiency ratios | | Total | ANS | DEB | DKB | GASH | MKL | SKB |
|----------------------------|--|-------|------|------|------|------|------|------|
| 1 | Elementary level: Wastage ratio | 1.3 | 1.31 | 1.3 | 1.4 | 1.6 | 1.1 | 1.3 |
| 2 | Survival ratio for Grade 2 | 91.4 | 93.5 | 92.5 | 85.9 | 85.2 | 97.4 | 90.8 |
| | Survival ratio for Grade 3 | 87.2 | 90.5 | 88.4 | 79.6 | 77.6 | 95.9 | 86.9 |
| | Survival ratio for Grade 4 | 83.7 | 87.1 | 84.9 | 75.2 | 71.4 | 94.4 | 84.4 |
| | Survival ratio for Grade 5 | 79.9 | 83.7 | 81.1 | 70.9 | 65.0 | 92.9 | 80.5 |
| 3 | Transition ratio from elementary level to middle level (No national exam.) | 76.5 | 81.0 | 77.4 | 67.9 | 60.9 | 91.2 | 77.5 |
| 4 | Proportion of total waste spent due to dropouts | 51.6 | 40.1 | 58.4 | 49.0 | 58.3 | 39.5 | 44.0 |
| 5 | Proportion of total waste spent due to repetition | 48.4 | 59.9 | 41.6 | 51.0 | 41.7 | 60.5 | 56.0 |
| 6 | Average length of study per graduate | 5.6 | 5.8 | 5.5 | 5.9 | 5.9 | 5.4 | 5.8 |

Chart 13. Elementary level Average length of study per student (ALSS) by zoba

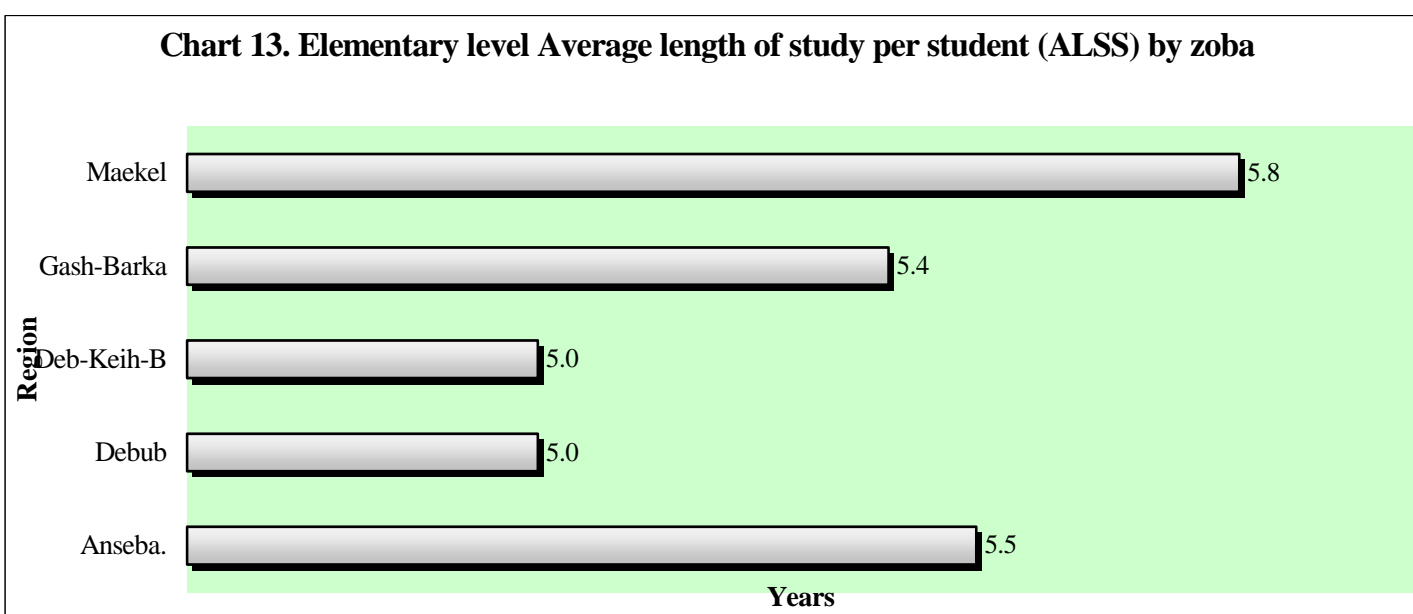
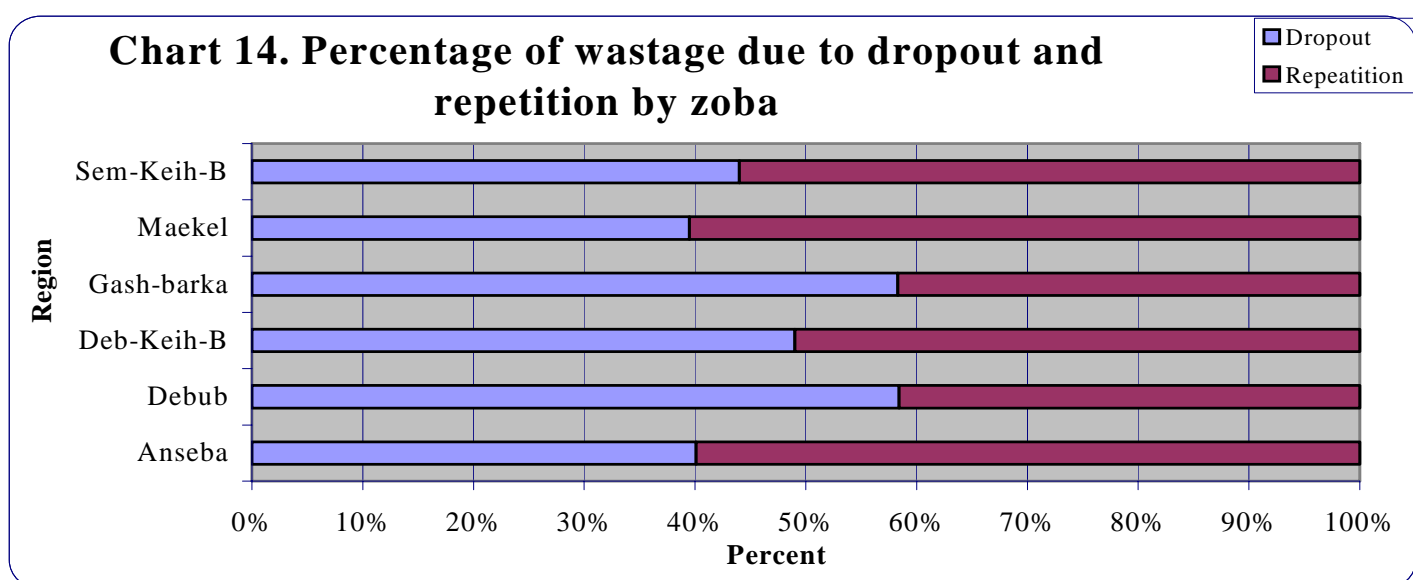


Chart 14. Percentage of wastage due to dropout and repetition by zoba



IX. Teaching staff: Elementary, middle and secondary level

Table 42. Teachers: Gender and level by zoba, 2010/11

| Zoba | 1-5 | | | 6-8 | | | 9-12 | | | Total | | |
|--------------|-------------|-------------|-------------|-------------|-------------|------------|-------------|-------------|------------|--------------|-------------|-------------|
| | T | M | F | T | M | F | T | M | F | T | M | F |
| Anseba | 1354 | 903 | 451 | 516 | 474 | 42 | 248 | 217 | 31 | 2118 | 1594 | 524 |
| Debub | 2176 | 1195 | 981 | 1212 | 1052 | 160 | 632 | 550 | 83 | 4021 | 2797 | 1224 |
| Deb-Keih-B | 212 | 192 | 20 | 85 | 84 | 1 | 44 | 43 | 1 | 341 | 319 | 22 |
| Gash-Barka | 1436 | 1106 | 330 | 490 | 451 | 39 | 247 | 227 | 20 | 2173 | 1784 | 389 |
| Maekel | 1845 | 639 | 1206 | 1111 | 844 | 267 | 839 | 635 | 204 | 3795 | 2118 | 1677 |
| Sawa | | | | | | | 384 | 364 | 20 | 384 | 364 | 20 |
| Sem-Keih-B | 681 | 545 | 136 | 293 | 270 | 23 | 167 | 148 | 19 | 1141 | 963 | 178 |
| Total | 7704 | 4580 | 3124 | 3707 | 3175 | 532 | 2561 | 2219 | 374 | 14004 | 9974 | 4030 |

1. Pupil/teacher ratio: Elementary, middle and secondary level

This ratio represents the average number of pupils per teacher at each level.

Table 43. Pupil /teacher ratio by year and level, 1991/92-2010/11

| Year | Level | | | | | | | | |
|---------|---------|---------|---------------|---------|---------|---------------|--------|---------|---------------|
| | 1-5 | | | 6-7 | | | 8-11 | | |
| | Pupil | Teacher | Pup/tea ratio | Pupil | Teacher | Pup/tea ratio | Pupil | Teacher | Pup/tea ratio |
| 1991/92 | 150,982 | 3,647 | 41 | 27,917 | 783 | 36 | 27,627 | 758 | 36 |
| 1992/93 | 184,656 | 4,978 | 37 | 28,431 | 855 | 33 | 31,531 | 905 | 35 |
| 1993/94 | 208,199 | 5,272 | 39 | 32,781 | 978 | 34 | 32,756 | 1,015 | 32 |
| 1994/95 | 224,287 | 5,583 | 40 | 34,995 | 948 | 37 | 36,728 | 1,081 | 34 |
| 1995/96 | 241,725 | 5,828 | 41 | 39,751 | 992 | 40 | 39,188 | 1,039 | 38 |
| 1996/97 | 240,737 | 5,476 | 44 | 47,460 | 1,017 | 47 | 40,594 | 942 | 43 |
| 1997/98 | 247,499 | 5,799 | 43 | 57,152 | 1,162 | 49 | 41,615 | 959 | 43 |
| 1998/99 | 26,1963 | 5,576 | 47 | 67,021 | 1,208 | 56 | 47,533 | 982 | 49 |
| 1999/00 | 29,5941 | 6,229 | 48 | 74,317 | 1,312 | 57 | 57,334 | 1,047 | 55 |
| 2000/01 | 298,691 | 6,668 | 45 | 76,564 | 1,377 | 56 | 63,951 | 1,188 | 54 |
| 2001/02 | 330,278 | 7,498 | 44 | 80,882 | 1,529 | 53 | 70,183 | 1,419 | 50 |
| 2002/03 | 359,423 | 7,692 | 47 | 87,019 | 1,614 | 54 | 72,818 | 1,277 | 57 |
| | 1-5 | | | 6-8 | | | 9-12 | | |
| 2003/04 | 374,997 | 8,033 | 47 | 122,966 | 2,241 | 55 | 69,401 | 1,645 | 43 |
| 2004/05 | 377,512 | 7,942 | 48 | 139,029 | 2,449 | 57 | 76,051 | 1,607 | 47 |
| 2005/06 | 364,263 | 7,711 | 47 | 148,082 | 2,491 | 59 | 77,644 | 1,552 | 50 |
| 2006/07 | 331,855 | 6,936 | 48 | 141,081 | 2,478 | 57 | 75,800 | 1,778 | 43 |
| 2007/08 | 314,034 | 7,311 | 43 | 144,031 | 2,704 | 53 | 83,411 | 1,811 | 46 |
| 2008/09 | 300,129 | 7,802 | 39 | 151,131 | 3,352 | 45 | 89,761 | 2,292 | 40 |
| 2009/10 | 286,021 | 7,535 | 38 | 151,702 | 3,680 | 41 | 95,076 | 2,472 | 38 |
| 2010/11 | 311,737 | 7,704 | 40 | 154,527 | 3,707 | 42 | 99,993 | 2,561 | 39 |

2. Teachers' qualifications

Teachers in the elementary level are considered professionally qualified if they are graduates of the TTI or have an equivalent / higher qualification.

Teachers in the middle level are considered professionally qualified if they have a qualification of higher education diploma (12+2) or have an equivalent or higher qualification. Teachers in the

secondary level are considered professionally qualified if they have a minimum qualification of Bachelor degree.

Table 44. Teachers: Qualifications and level by year, 1991/92-2010/11

| Year | Level | | | | | | | | |
|---------|-------|------------|---------|-------|------------|---------|-------|-------------|---------|
| | 1-5 | | | 6-7 | | | 8-11 | | |
| | Total | qualified | Percent | Total | Qualified | Percent | Total | Qualified | Percent |
| 1991/92 | N.A | N.A | N.A | N.A | N.A | N.A | N.A | N.A | N.A |
| 1992/93 | 4,978 | 2,128 | 42.7 | 855 | 484 | 56.6 | 905 | 431 | 47.6 |
| 1993/94 | 5,272 | 2,062 | 39.1 | 978 | 710 | 72.6 | 1,015 | 479 | 47.2 |
| 1994/95 | 5,583 | 2,675 | 47.9 | 948 | 661 | 69.7 | 1,081 | 507 | 46.9 |
| 1995/96 | 5,828 | 4,218 | 72.4 | 992 | 490 | 49.4 | 1,039 | 540 | 52.0 |
| 1996/97 | 5,476 | 3,747 | 68.4 | 1,017 | 446 | 43.9 | 942 | 527 | 55.9 |
| 1997/98 | 5,799 | 3,915 | 67.5 | 1,162 | 500 | 43.0 | 959 | 682 | 71.1 |
| 1998/99 | 5,576 | 4,058 | 72.8 | 1,208 | 459 | 37.9 | 982 | 715 | 72.8 |
| 1999/00 | 6,229 | 4,472 | 71.8 | 1,312 | 420 | 32.0 | 1,047 | 729 | 69.6 |
| 2000/01 | 6,668 | 4,699 | 70.5 | 1,377 | 486 | 35.3 | 1,188 | 869 | 73.1 |
| 2001/02 | 7,498 | 5,456 | 72.8 | 1,529 | 471 | 30.8 | 1,419 | 1,032 | 72.7 |
| 2002/03 | 7,692 | 6,194 | 80.5 | 1,614 | 507 | 31.4 | 1,277 | 870 | 68.1 |
| | | 1-5 | | | 6-8 | | | 9-12 | |
| 2003/04 | 8,033 | 6,675 | 83.1 | 2,241 | 633 | 28.2 | 1,645 | 1,294 | 78.6 |
| 2004/05 | 7,942 | 6,640 | 83.6 | 2,449 | 708 | 28.9 | 1,607 | 1,311 | 81.6 |
| 2005/06 | 7,711 | 6,749 | 87.5 | 2,491 | 709 | 28.5 | 1,552 | 1,276 | 82.2 |
| 2006/07 | 6,936 | 6,039 | 87.1 | 2,478 | 911 | 36.8 | 1,778 | 1,524 | 85.7 |
| 2007/08 | 7,311 | 6,594 | 90.2 | 2,704 | 1,137 | 42.0 | 1,811 | 1,453 | 80.2 |
| 2008/09 | 7,802 | 7,197 | 92.2 | 3,352 | 1,825 | 54.5 | 2,292 | 1,794 | 78.3 |
| 2009/10 | 7,535 | 7,069 | 93.8 | 3,680 | 2,229 | 60.6 | 2,472 | 1,981 | 80.1 |
| 2010/11 | 7,704 | 7,005 | 90.9 | 3,707 | 2,563 | 69.1 | 2,561 | 2,125 | 83.0 |

3. Female teachers

Table 45. Percentage of female teachers by level and year, 1991/92-2010/11

| Year | 1-5 | | | 6-7 | | | 8-11 | | |
|---------|-------|------------|--------|-------|------------|--------|-------|-------------|--------|
| | T | F | % of F | T | F | % of F | T | F | % of F |
| 1991/92 | 3,647 | 1,411 | 38.7 | 783 | 139 | 17.8 | 758 | 67 | 8.8 |
| 1992/93 | 4,978 | 1,849 | 37.1 | 855 | 143 | 16.7 | 905 | 93 | 10.3 |
| 1993/94 | 5,272 | 1,865 | 35.4 | 978 | 140 | 14.3 | 1,015 | 104 | 10.2 |
| 1994/95 | 5,583 | 1,974 | 35.4 | 948 | 139 | 14.7 | 1,081 | 108 | 10.0 |
| 1995/96 | 5,828 | 2,025 | 34.7 | 992 | 156 | 15.7 | 1,039 | 103 | 9.9 |
| 1996/97 | 5,476 | 1,977 | 36.1 | 1,017 | 170 | 16.7 | 942 | 106 | 11.3 |
| 1997/98 | 5,799 | 1,893 | 32.6 | 1,162 | 170 | 14.6 | 959 | 113 | 11.8 |
| 1998/99 | 5,576 | 1,951 | 35.0 | 1,208 | 149 | 12.3 | 982 | 112 | 11.4 |
| 1999/00 | 6,229 | 2,330 | 37.4 | 1,312 | 167 | 12.7 | 1,047 | 109 | 10.4 |
| 2000/01 | 6,668 | 2,710 | 40.6 | 1,377 | 160 | 11.6 | 1,188 | 115 | 9.7 |
| 2001/02 | 7,498 | 2,873 | 38.3 | 1,529 | 177 | 11.6 | 1,419 | 145 | 10.2 |
| 2002/03 | 7,692 | 2,754 | 35.8 | 1,614 | 178 | 11.0 | 1,277 | 140 | 11.0 |
| | | 1-5 | | | 6-8 | | | 9-12 | |
| 2003/04 | 8,033 | 2,887 | 35.9 | 2,241 | 216 | 9.6 | 1,645 | 215 | 13.1 |
| 2004/05 | 7,942 | 3,166 | 39.9 | 2,449 | 245 | 10.0 | 1,607 | 215 | 13.4 |
| 2005/06 | 7,711 | 3,350 | 43.4 | 2,491 | 314 | 12.6 | 1,552 | 204 | 13.1 |
| 2006/07 | 6,936 | 3,307 | 47.7 | 2,478 | 245 | 10.0 | 1,778 | 208 | 11.7 |
| 2007/08 | 7,311 | 3,241 | 44.3 | 2,704 | 258 | 10.5 | 1,811 | 210 | 11.6 |
| 2008/09 | 7,802 | 3,144 | 40.3 | 3,352 | 331 | 9.9 | 2,292 | 267 | 11.7 |
| 2009/10 | 7,535 | 3,079 | 40.9 | 3,680 | 485 | 13.2 | 2,472 | 314 | 12.7 |
| 2010/11 | 7,704 | 3,124 | 40.6 | 3,707 | 532 | 14.4 | 2,561 | 377 | 14.4 |

N.B. In secondary schools the pedagogic head, unit leader, and director are included as teachers.

X. Age-specific enrolment, 2010/11

Table 46. Age-specific enrolment, 2010/11

| Age | School Age population | | Pre-primary | | Elementary | | Middle | | Secondary | | Enrolment % | |
|--------------|-----------------------|------------------|---------------|---------------|----------------|----------------|----------------|---------------|---------------|---------------|--------------|--------------|
| | T | F | T | F | T | F | T | F | T | F | T | F |
| 0 | 144,644 | 71,072 | | | | | | | | | | |
| 1 | 119,129 | 58,270 | | | | | | | | | | |
| 2 | 99,356 | 48,331 | 360 | 174 | | | | | | | | |
| 3 | 84,709 | 40,952 | 1,628 | 816 | | | | | | | 1.92 | 1.99 |
| 4 | 74,578 | 35,832 | 14,001 | 6,822 | | | | | | | 18.77 | 19.04 |
| 5 | 68,349 | 32,669 | 25,435 | 12,310 | 269 | 125 | | | | | 37.61 | 38.06 |
| 6 | 65,407 | 31,159 | 4,555 | 2,276 | 31,650 | 14,876 | | | | | 55.35 | 55.05 |
| 5-6 | 133,756 | 63,829 | 29,990 | 14,586 | 31,919 | 15,001 | | | | | 46.28 | 46.35 |
| 7 | 65,141 | 31,000 | 117 | 52 | 53,263 | 24,765 | | | | | 81.95 | 80.05 |
| 8 | 66,936 | 31,891 | 8 | 6 | 55,679 | 25,801 | | | | | 83.19 | 80.92 |
| 9 | 70,179 | 33,528 | | | 48,181 | 22,108 | | | | | 68.65 | 65.94 |
| 10 | 75,004 | 35,955 | | | 45,803 | 20,770 | 409 | 209 | | | 61.61 | 58.35 |
| 11 | 81,541 | 39,220 | | | 34,882 | 15,228 | 8,570 | 4,359 | | | 53.29 | 49.94 |
| 7-11 | 358,801 | 171,594 | 125 | 58 | 237,808 | 108,672 | 8,979 | 4,568 | 0 | | 68.82 | 66.03 |
| 12 | 85,451 | 41,282 | | | 22,656 | 9,210 | 23,352 | 11,266 | 22 | 11 | 53.87 | 49.63 |
| 13 | 84,631 | 41,143 | | | 14,251 | 5,239 | 35,861 | 16,791 | 575 | 294 | 59.89 | 54.26 |
| 14 | 80,702 | 39,544 | | | 3,555 | 1,077 | 35,032 | 15,574 | 5,078 | 2,441 | 54.11 | 48.28 |
| 12-14 | 250,784 | 121,969 | 0 | | 40,462 | 15,526 | 94,245 | 43,631 | 5,675 | 2,746 | 55.98 | 50.75 |
| 15 | 77,480 | 38,297 | | | 1,283 | 324 | 26,541 | 11,174 | 12,779 | 6,191 | 52.40 | 46.19 |
| 16 | 74,313 | 37,133 | | | 235 | 57 | 15,750 | 6,141 | 19,520 | 8,933 | 47.78 | 40.75 |
| 17 | 70,788 | 35,588 | | | 26 | 3 | 7,549 | 2,669 | 23,369 | 10,288 | 43.71 | 36.42 |
| 18 | 67,119 | 33,642 | | | 3 | 1 | 1,090 | 302 | 17,297 | 7,015 | 27.40 | 21.75 |
| 15-18 | 289,699 | 144,660 | | | 1,547 | 385 | 50,930 | 20,286 | 72,965 | 32,427 | 43.30 | 36.71 |
| 19 | 63,313 | 31,435 | | | | | 313 | 91 | 17,140 | 6,164 | | |
| 20 | 59,291 | 29,164 | | | | | | | 2,757 | 874 | | |
| 21 | 55,208 | 26,823 | | | | | | | 1,010 | 319 | | |
| 22 | 51,056 | 24,689 | | | | | | | 339 | 96 | | |
| 23 | 46,868 | 22,930 | | | | | | | 86 | 49 | | |
| 24 | 42,823 | 21,487 | | | | | | | | | | |
| 25 | 38,845 | 20,016 | | | 1 | | 60 | 12 | | | | |
| 26 | 34,704 | 18,459 | | | | | | | | | | |
| 27 | 32,127 | 17,591 | | | | | | | 21 | 9 | | |
| 28 | 31,893 | 17,727 | | | | | | | | | | |
| 29 | 33,130 | 18,475 | | | | | | | | | | |
| 30 | 34,320 | 19,219 | | | | | | | | | | |
| | 2,079,035 | 1,024,524 | 46,104 | 22,456 | 311,737 | 139,584 | 154,527 | 68,588 | 99,993 | 42,684 | | |